

BOLETUS BALTIC SIA





MARTIN



A

B

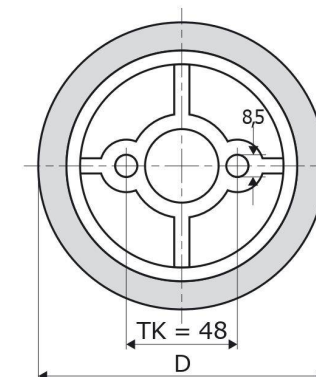
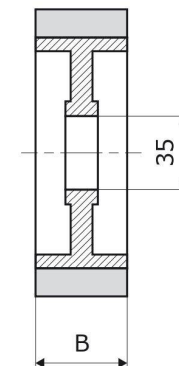
C

D

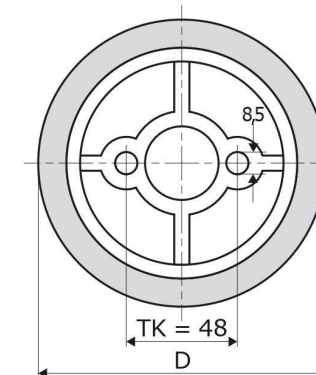
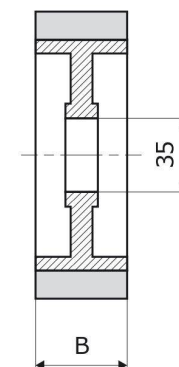
E



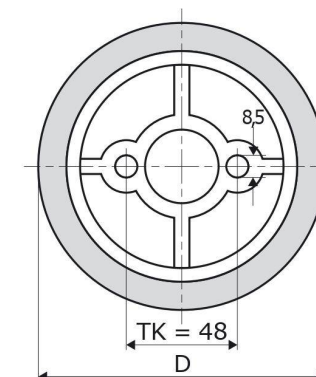
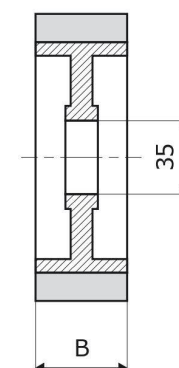
	(AI) (W) 50 ShA		
		110-20	110-25
D (mm)		110	110
B (mm)		20	25
Kat. št.			
Bestell Nr.		111-0003	111-0006
Cat. No.			111-0008

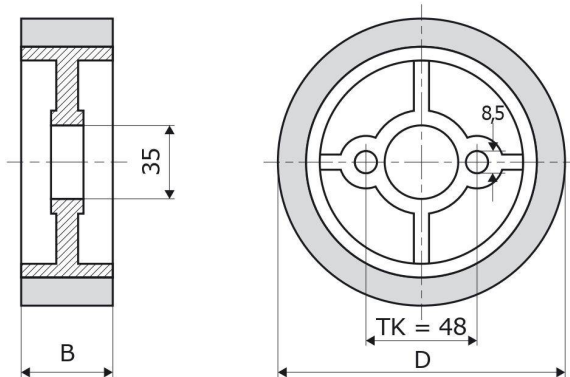
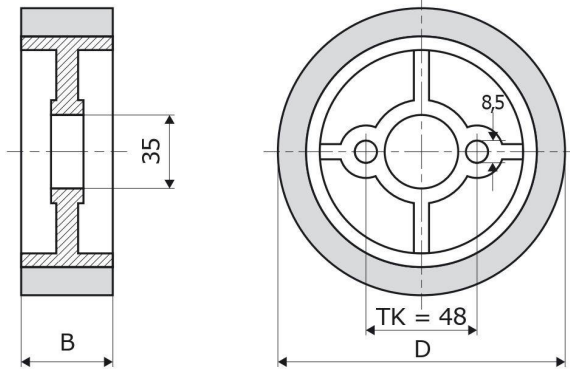


	(AI) (W) 50 ShA		
		110-40	110-50
D (mm)		110	110
B (mm)		40	50
Kat. št.			
Bestell Nr.		111-0010	111-0014
Cat. No.			111-0018



	(AI) (W) 50 ShA		
		113-50	113-60
D (mm)		113	113
B (mm)		50	60
Kat. št.			
Bestell Nr.		111-0019	111-0022
Cat. No.			111-0028





	120-30	120-40	120-50	120-60S
D (mm)	120	120	120	120
B (mm)	30	40	50	60
Kat. št.				
Bestell Nr.	111-0032	111-0034	111-0039	111-0041
Cat. No.				

	128-50	128-60S	135-50	135-60
D (mm)	128	128	135	135
B (mm)	50	60	50	60
Kat. št.				
Bestell Nr.	111-0044	111-0046	111-0047	111-0245
Cat. No.				



B

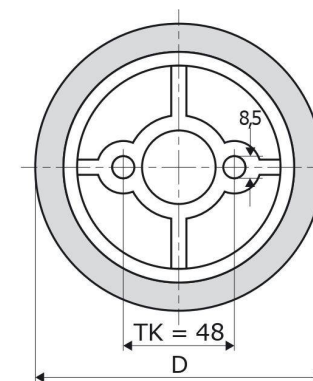
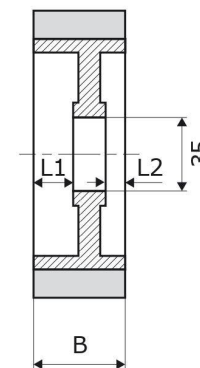
C

D

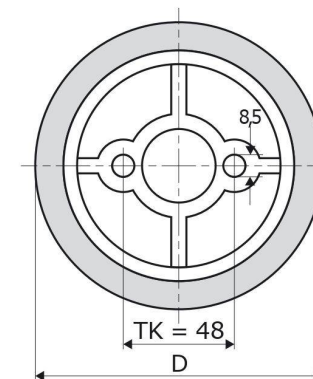
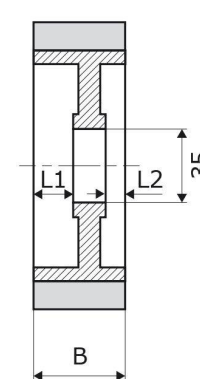
E

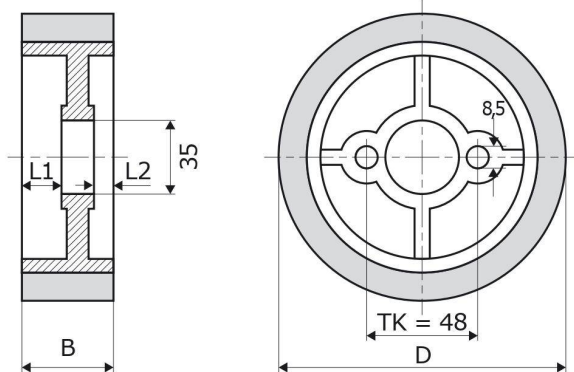


	110-30A	110-40A	110-50A
D (mm)	110	110	110
B (mm)	30	40	50
L1	16	19	29
L2	2	9	9
Kat. št.			
Bestell Nr.	111-0007	111-0009	111-0012
Cat. No.			



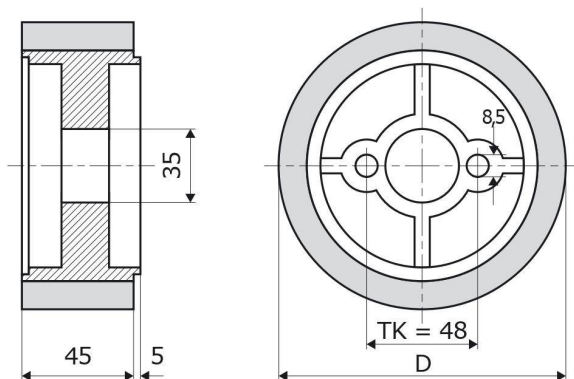
	110-60A	113-60A	120-30A
D (mm)	110	113	120
B (mm)	60	60	30
L1	29	29	16
L2	19	19	2
Kat. št.			
Bestell Nr.	111-0016	111-0021	111-0031
Cat. No.			





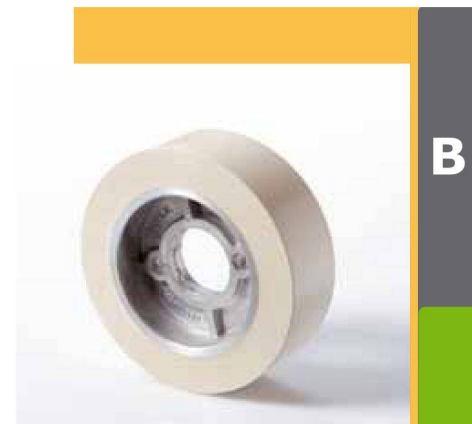
	120-40A	120-50A	120-60A	128-60A
D (mm)	120	120	120	128
B (mm)	40	50	60	60
L1	19	29	29	29
L2	9	9	19	19
Kat. št.				
Bestell Nr.	111-0033	111-0037	111-0040	111-0045
Cat. No.				

AI W 50 ShA

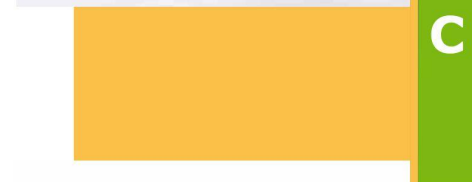


	110-45	120-45
D (mm)	110	120
Kat. št.		
Bestell Nr.	111-0011	111-0035
Cat. No.		

AI W 50 ShA



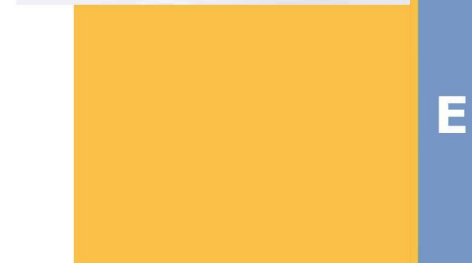
B



C



D



E

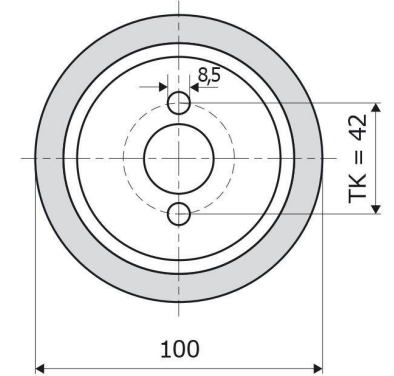
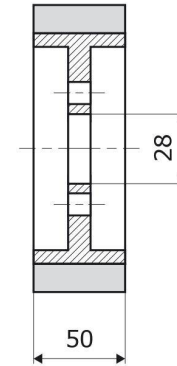


AI W 50 ShA

100-50

Kat. št.
Bestell Nr.
Cat. No.

111-0179

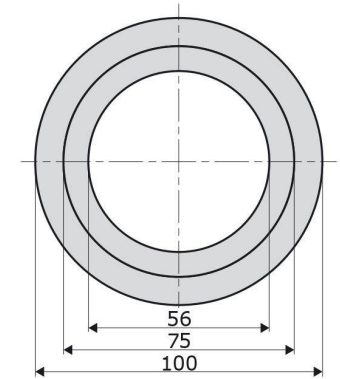
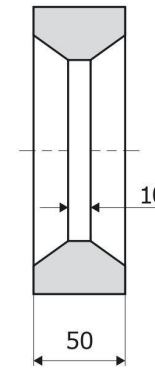


W 50 ShA

100-50 Ring

Kat. št.
Bestell Nr.
Cat. No.

111-0194



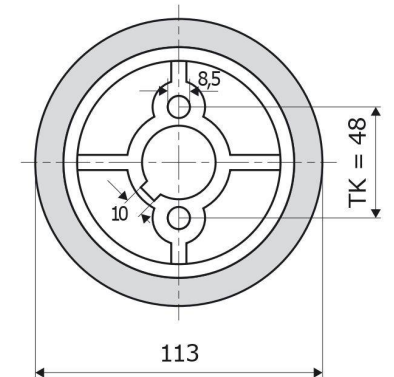
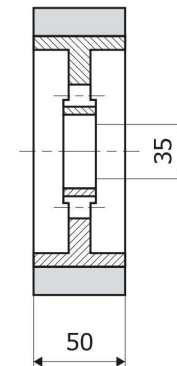
STÄHLE

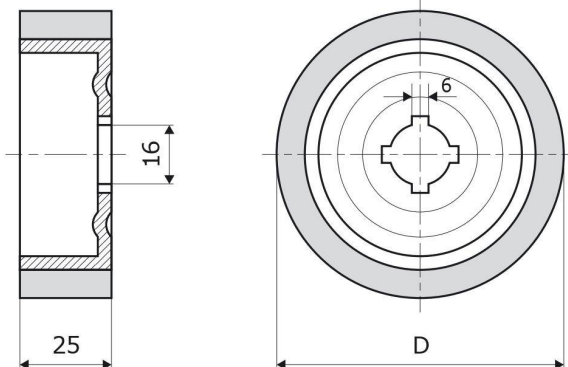
AI W 50 ShA

113-50
Stähle

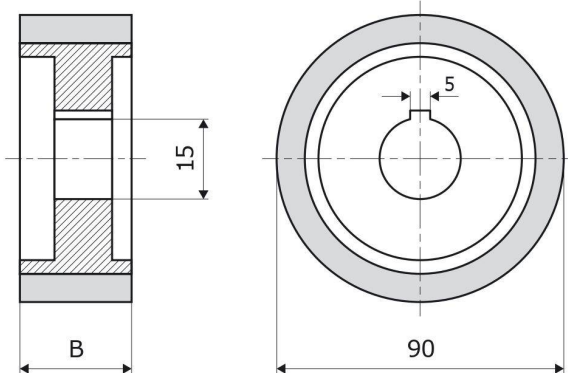
Kat. št.
Bestell Nr.
Cat. No.

111-0020

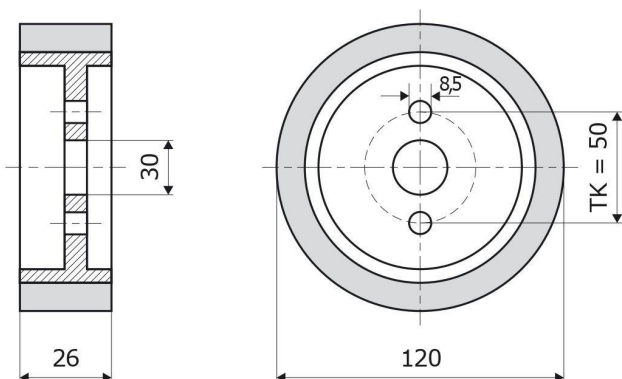


**ELU**
50 ShA

	110-25 Elu	120-25 Elu
D (mm)	110	120
Kat. št. Bestell Nr. Cat. No.	111-0005	111-0029

**FESTO**
60 ShA

	90-50 Festo	90-40 Festo	90-33 Festo
B (mm)	50	40	33
Kat. št. Bestell Nr. Cat. No.	111-0122	111-0121	111-0120

**FESTO GOLIATH**
60 ShA

	120-26 Festo Goliath
Kat. št. Bestell Nr. Cat. No.	111-0030



A



C



D

E



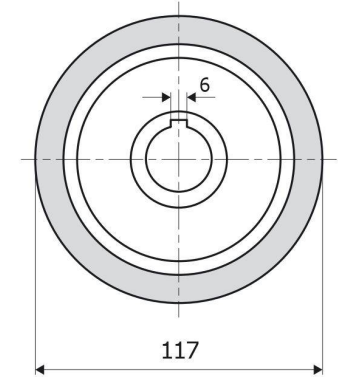
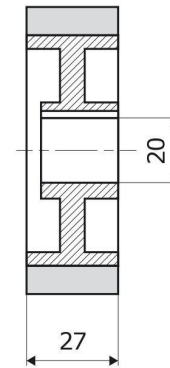
ROMA

AI W 60 ShA

117-27
Roma

Kat. št.
Bestell Nr.
Cat. No.

111-0023



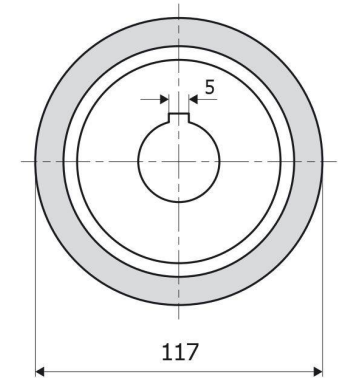
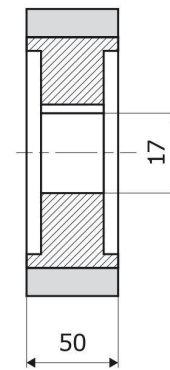
ROMA

AI W 60 ShA

117-50
Roma

Kat. št.
Bestell Nr.
Cat. No.

111-0024



FROMMIA

AI W 60 ShA

80-60
Frommia

70-60
Frommia

D (mm)

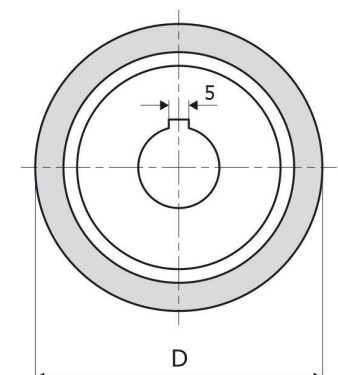
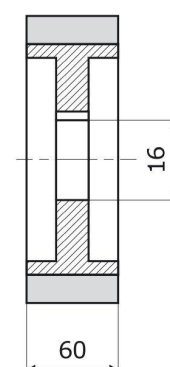
80

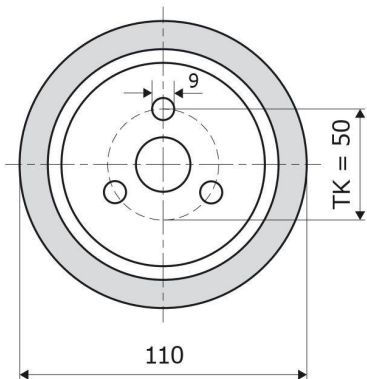
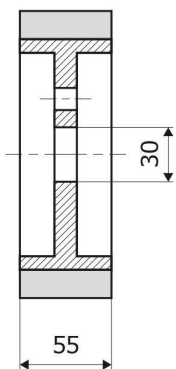
70

Kat. št.
Bestell Nr.
Cat. No.

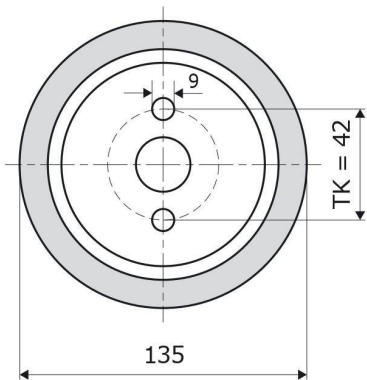
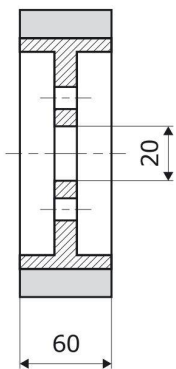
111-0111

111-0098

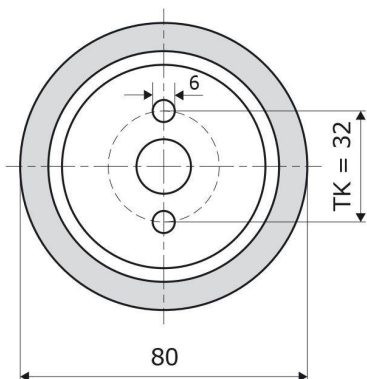
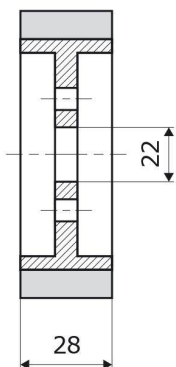


**FROMMIA**
60 ShA
110-55
FrommiaKat. št.
Bestell Nr.
Cat. No.

111-0015

**FROMMIA**
60 ShA
135-60
FrommiaKat. št.
Bestell Nr.
Cat. No.

111-0048

**MAGGI**
60 ShA
80-28
MaggiKat. št.
Bestell Nr.
Cat. No.

111-0110



A



B

C



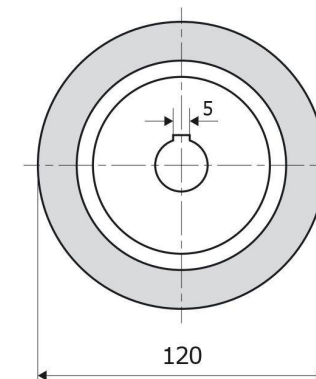
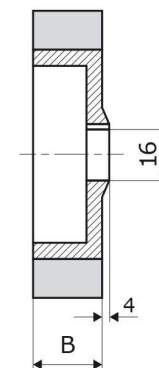
D

E

**MAGGI VARIOMATIC**

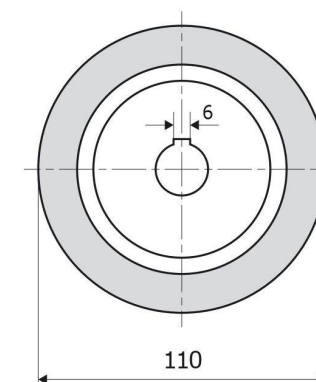
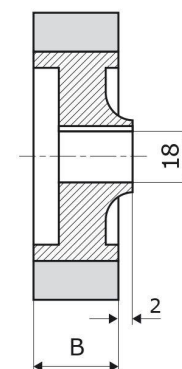
(Al) (W) 60 ShA

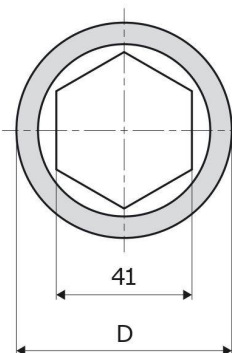
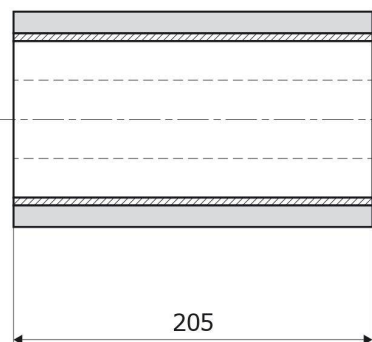
	120-25 Maggi Variomatic	120-20 Maggi Variomatic
B (mm)	25	20
Kat. št. Bestell Nr. Cat. No.	111-0176	111-0181

**DDR**

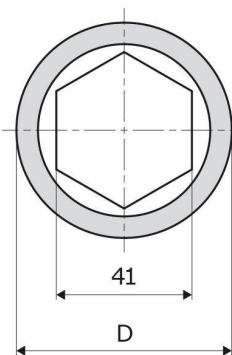
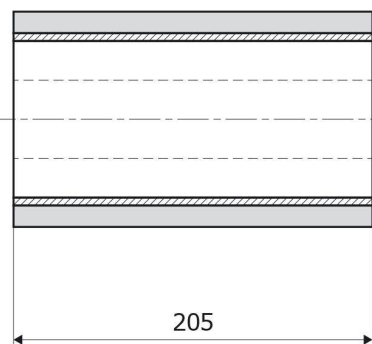
(Al) (W) 60 ShA

	110-60 DDR	110-50 DDR	110-25 DDR
B (mm)	60	50	25
Kat. št. Bestell Nr. Cat. No.	111-0017	111-0013	111-0004

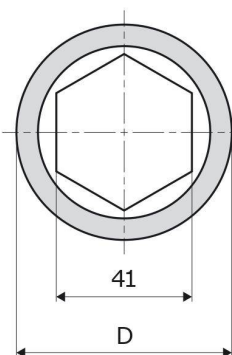
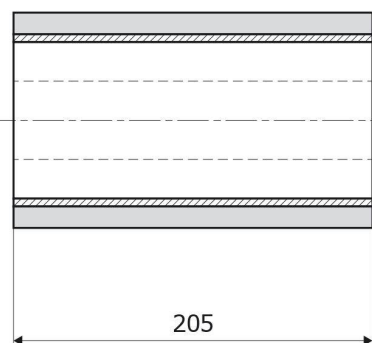


**MARTIN****60 ShA**

	74-205 Martin	85-205 Martin
D (mm)	74	85
Kat. št. Bestell Nr. Cat. No.	111-0100	111-0114

**MARTIN****65 ShA**

	74-205 Martin	85-205 Martin
D (mm)	74	85
Kat. št. Bestell Nr. Cat. No.	111-0203	111-0202

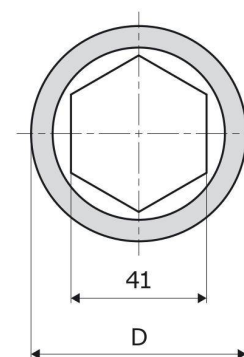
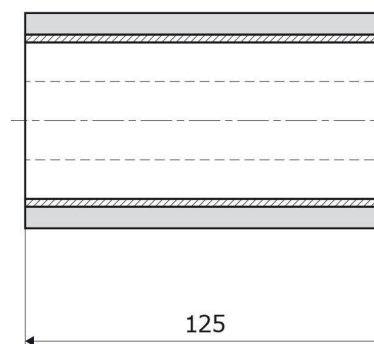
**MARTIN****70 ShA**

	74-205 Martin	85-205 Martin
D (mm)	74	85
Kat. št. Bestell Nr. Cat. No.	111-0101	111-0115

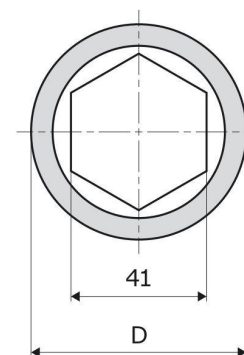
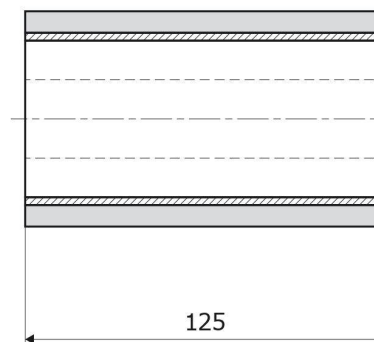
**A****C****D****E**

**PANHANS**

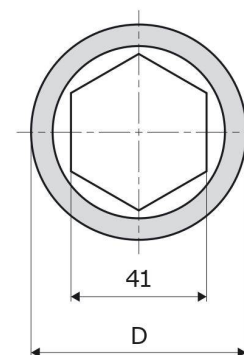
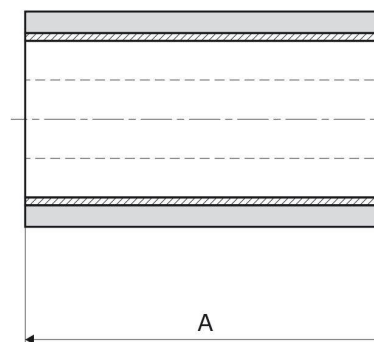
	75-125 Panhans	90-125 Panhans
D (mm)	75	90
Kat. št. Bestell Nr. Cat. No.	111-0170	111-0118

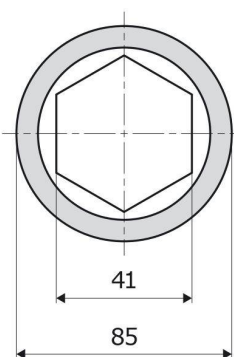
**PANHANS**

	90-125 Panhans
D (mm)	90
Kat. št. Bestell Nr. Cat. No.	111-0119

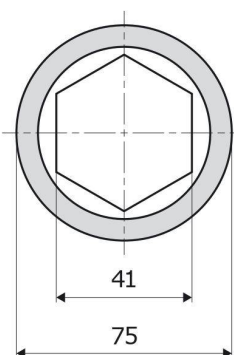
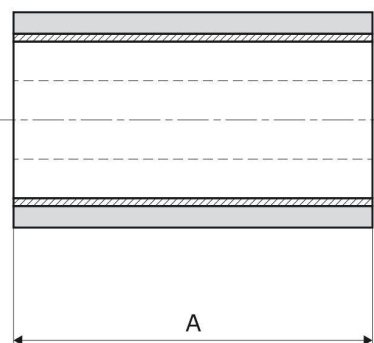
**SAC**

	85-210 SAC	85-175 SAC
A (mm)	210	175
Kat. št. Bestell Nr. Cat. No.	111-0116	111-0112

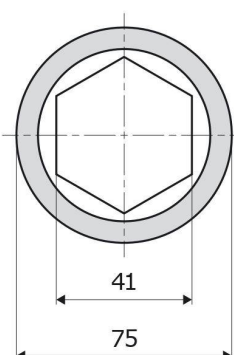


**SAC****70 ShA**

	85-210 SAC	85-175 SAC
A (mm)	210	175
Kat. št. Bestell Nr. Cat. No.	111-0117	111-0113

**HOFMANN****60 ShA**

	75-210 Hofmann	75-170 Hofmann	75-90 Hofmann
A (mm)	210	170	90
Kat. št. Bestell Nr. Cat. No.	111-0103	111-0171	111-0104

**HOFMANN****70 ShA**

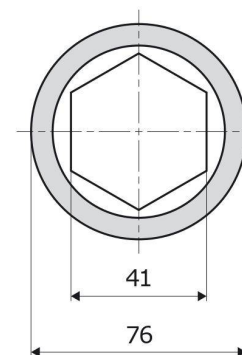
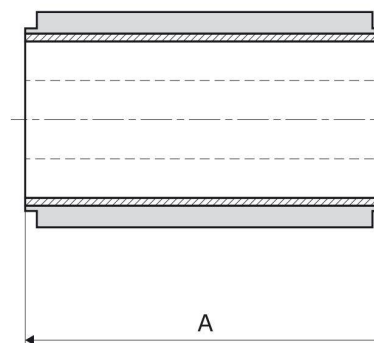
	75-210 Hofmann	75-90 Hofmann
A (mm)	210	90
Kat. št. Bestell Nr. Cat. No.	111-0102	111-0105

**B****C****D****E**

**KÖLLE**

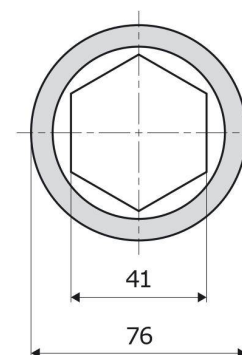
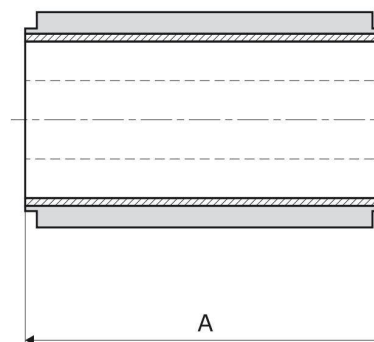
AI W 60 ShA

	76-814 Kölle	76-644 Kölle	76-514 Kölle
A (mm)	814	644	514
Kat. št. Bestell Nr. Cat. No.	111-0248	111-0108	111-0106

**KÖLLE**

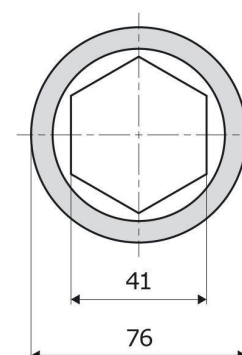
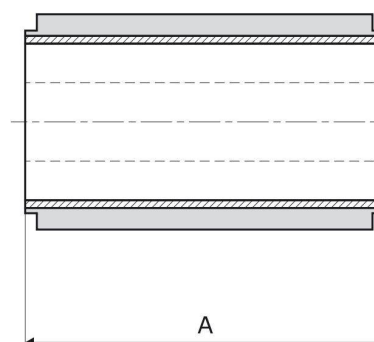
AI BL 70 ShA

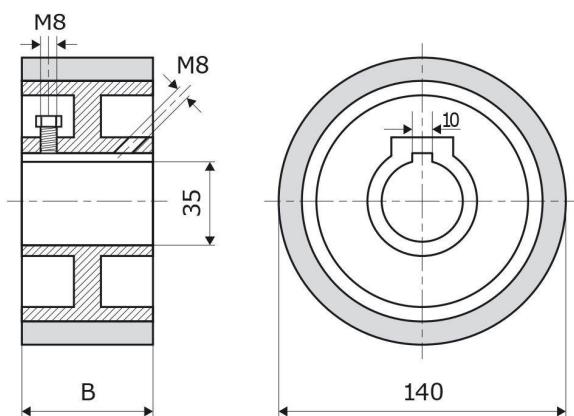
	76-814 Kölle	76-644 Kölle	76-514 Kölle
A (mm)	814	644	514
Kat. št. Bestell Nr. Cat. No.	111-0249	111-0109	111-0107

**KÖLLE**

AI G 65 ShA

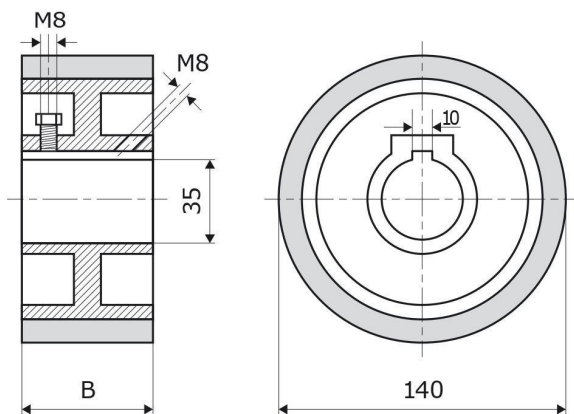
	76-814 Kölle	76-644 Kölle	76-514 Kölle
A (mm)	814	644	514
Kat. št. Bestell Nr. Cat. No.	111-0247	111-0228	111-0229



**WEINIG**
70 ShA

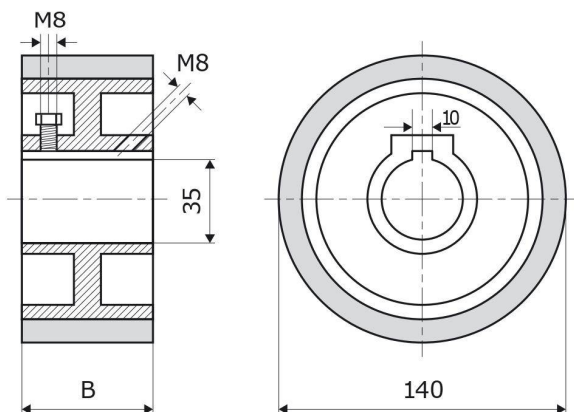
 140-50-35V
 Weinig

B (mm) 50

 Kat. št.
 Bestell Nr. 111-0074
 Cat. No.
**WEINIG**
65 ShA

 140-50-35V
 Weinig

B (mm) 50

 Kat. št.
 Bestell Nr. 111-0178
 Cat. No.
**WEINIG**
60 ShA

 140-50-35V
 Weinig

B (mm) 50

 Kat. št.
 Bestell Nr. 111-0073
 Cat. No.


A



C

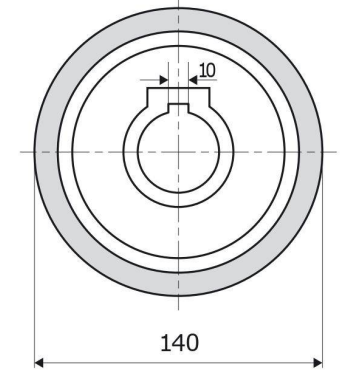
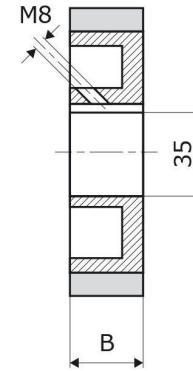


D

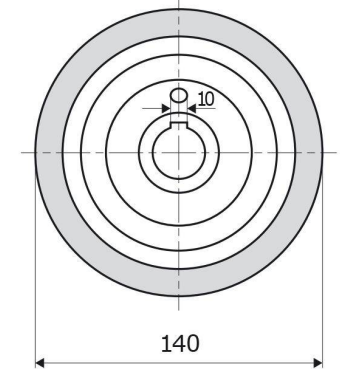
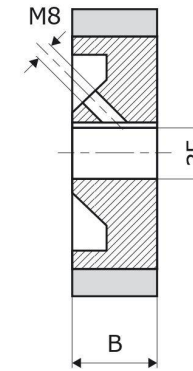
E



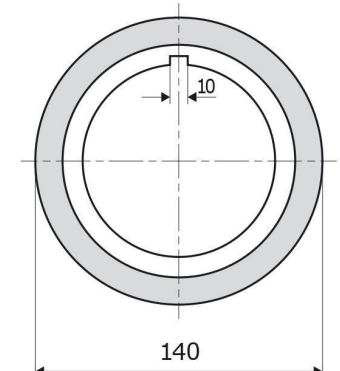
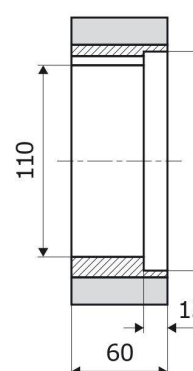
WEINIG	70 ShA
	140-30-35V Weinig
B (mm)	30
Kat. št. Bestell Nr. Cat. No.	111-0066

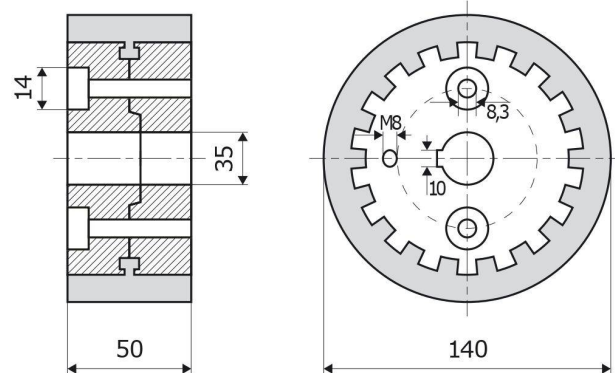


WEINIG	70 ShA
	140-25-35V Weinig
	140-20-35V Weinig
	140-15-35V Weinig
	140-10-35V Weinig
B (mm)	25 20 15 10
Kat. št. Bestell Nr. Cat. No.	111-0063 111-0054 111-0051 111-0162



WEINIG	70 ShA
	140-60-110 Weinig
Kat. št. Bestell Nr. Cat. No.	111-0197



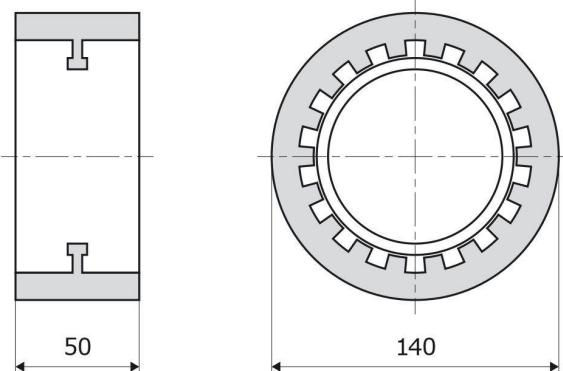
**WEINIG**

AI B 70 ShA

140-50-MT
Weinig

Kat. št.
Bestell Nr.
Cat. No.

111-0078

**WEINIG RING**

W 60 ShA

B 70 ShA

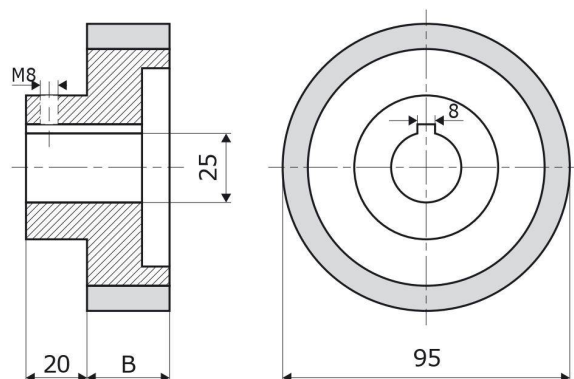
140-50-RT
Weinig

140-50-RT
Weinig

Kat. št.
Bestell Nr.
Cat. No.

111-0081

111-0082

**WEINIG**

AI W 60 ShA

95-50-25
Weinig

95-30-25
Weinig

B (mm)

50

30

Kat. št.
Bestell Nr.
Cat. No.

111-0125

111-0124



A

B

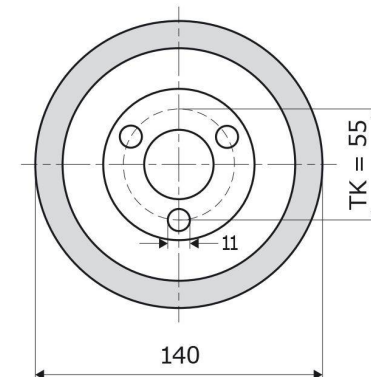
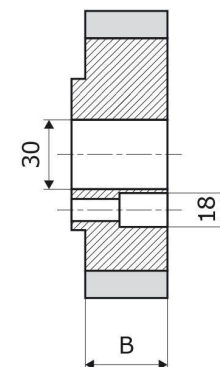
C

D

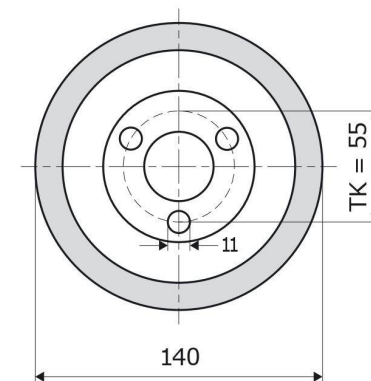
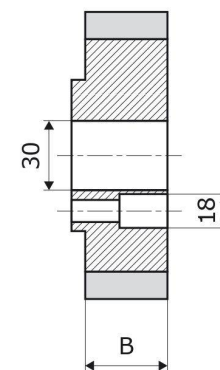
E

**WEINIG**
 (Al)  **70 ShA**

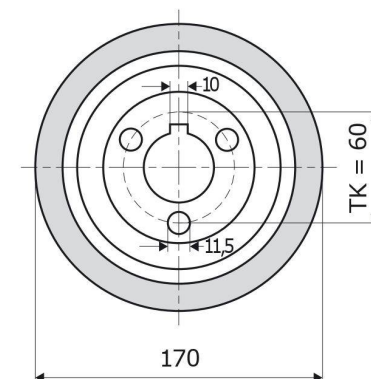
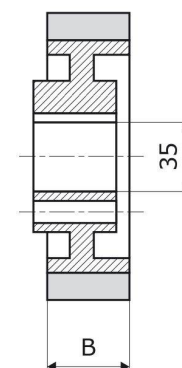
	140-50-3V Weinig	140-30-3V Weinig	140-25-3V Weinig
B (mm)	50	30	25
Kat. št. Bestell Nr. Cat. No.	111-0069	111-0064	111-0059

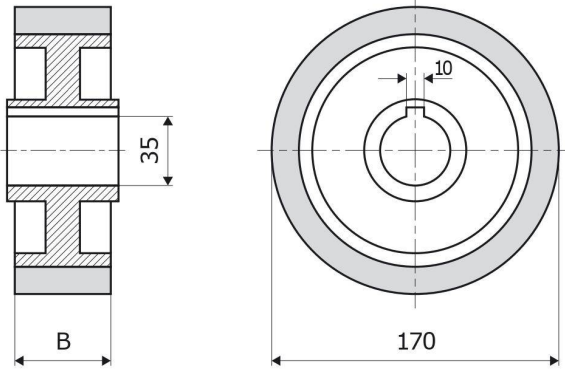
**WEINIG**
 (Al)  **70 ShA**

	140-22-3V Weinig	140-19-3V Weinig	140-15-3V Weinig
B (mm)	22	19	15
Kat. št. Bestell Nr. Cat. No.	111-0058	111-0052	111-0050

**WEINIG**
 (Al)  **70 ShA**

	170-50-3V Weinig	170-15-3V Weinig
B (mm)	50	15
Kat. št. Bestell Nr. Cat. No.	111-0092	111-0087

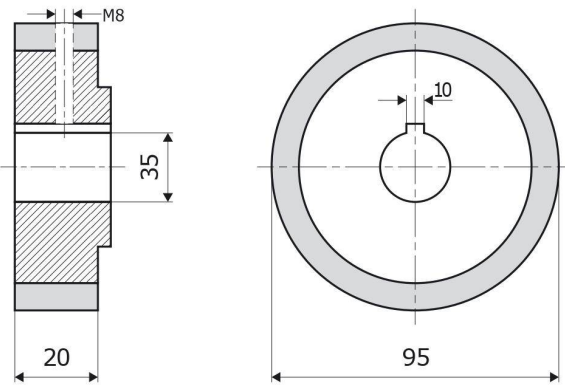




WEINIG

Al B 70 ShA

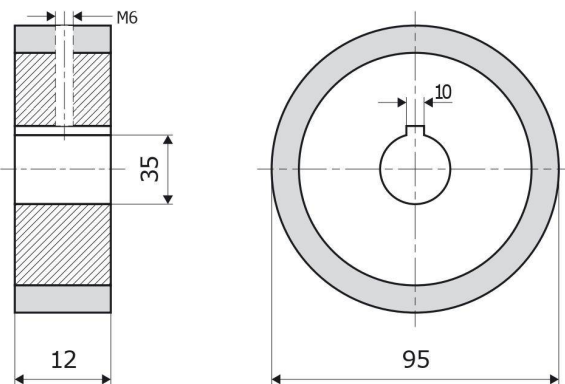
	170-50-35 Weinig	170-35-35 Weinig	170-25-35 Weinig	170-20-35 Weinig
B (mm)	50	35	25	20
Kat. št. Bestell Nr. Cat. No.	111-0091	111-0090	111-0089	111-0088



WEINIG

Al B 70 ShA

	95-20-35 Weinig
Kat. št. Bestell Nr. Cat. No.	111-0160



WEINIG

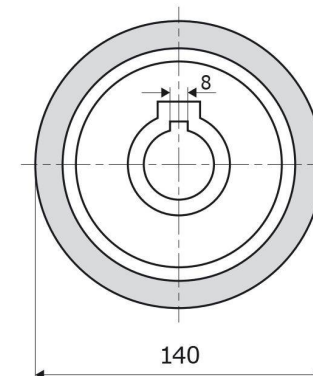
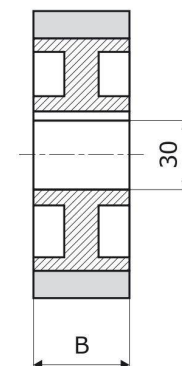
Al B 70 ShA

	95-12-35 Weinig
Kat. št. Bestell Nr. Cat. No.	111-0159

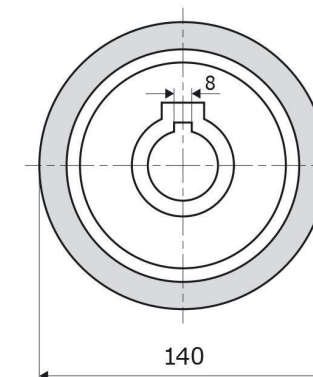
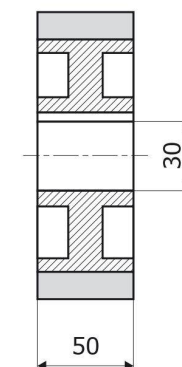


**WEINIG**
 (AI)  **70 ShA**

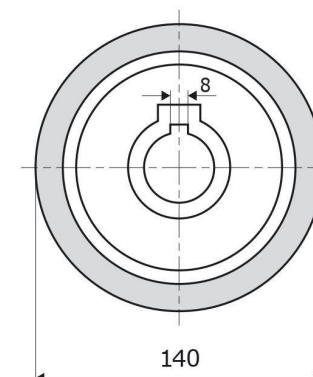
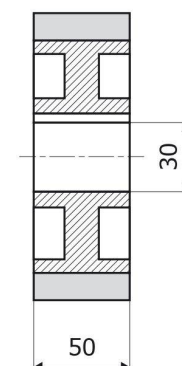
	140-50-30 Weinig	140-25-30 Weinig
B (mm)	50	25
Kat. št. Bestell Nr. Cat. No.	111-0072	111-0062

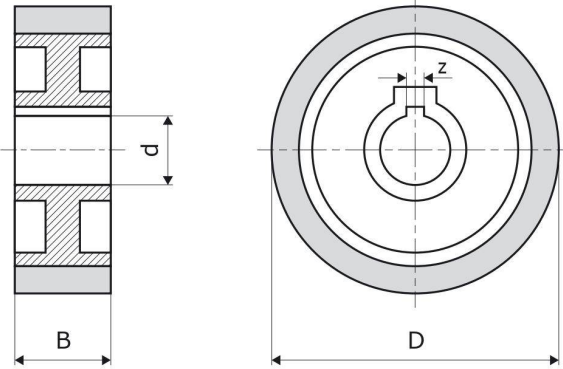
**WEINIG**
 (AI)  **65 ShA**

	140-50-30 Weinig	140-25-30 Weinig
B (mm)	50	25
Kat. št. Bestell Nr. Cat. No.	111-0218	

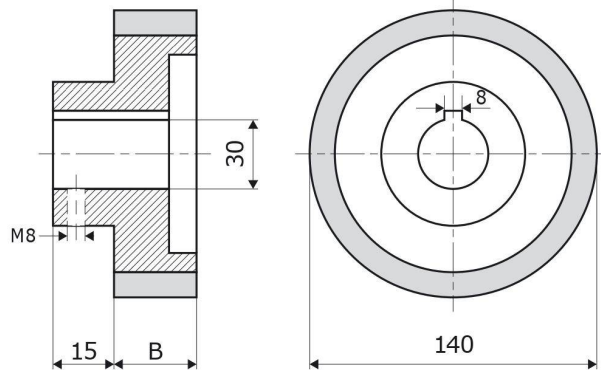
**WEINIG**
 (AI)  **60 ShA**

	140-50-30 Weinig	140-25-30 Weinig
B (mm)	50	25
Kat. št. Bestell Nr. Cat. No.	111-0144	

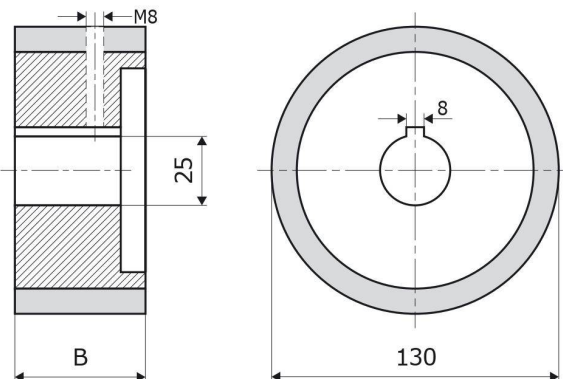


**LESTRO**
 (Al)  **70 ShA**

	140-50 Lestro	140-25 Lestro	240-48 Lestro
D (mm)	140	140	240
B (mm)	50	25	48
d (mm)	30	30	50
z (mm)	6	6	10
Kat. št. Bestell Nr. Cat. No.	111-0070	111-0060	111-0097

**GUBISCH**
 (Al)  **70 ShA**

	140-50 Gubisch	140-30 Gubisch	140-25 Gubisch
B (mm)	50	30	25
Kat. št. Bestell Nr. Cat. No.	111-0071	111-0065	111-0061

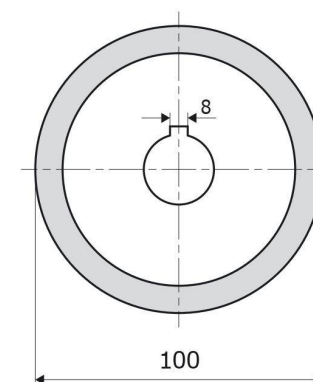
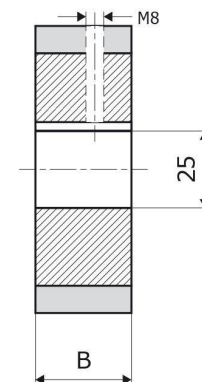
**GUBISCH**
 (Al)  **70 ShA**

	130-40-25-8 Gubisch	130-35-25-8 Gubisch
B (mm)	40	35
Kat. št. Bestell Nr. Cat. No.	111-0223	111-0222

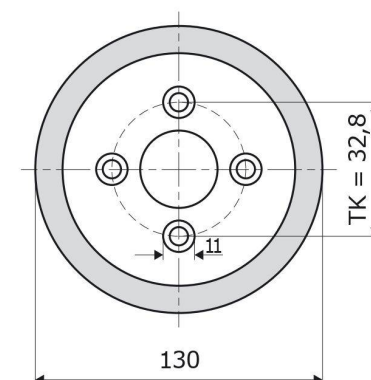
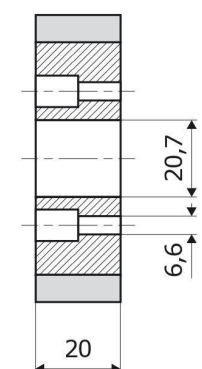
**A****B****C****D****E**

**GUBISCH**
 (Al)  70 ShA

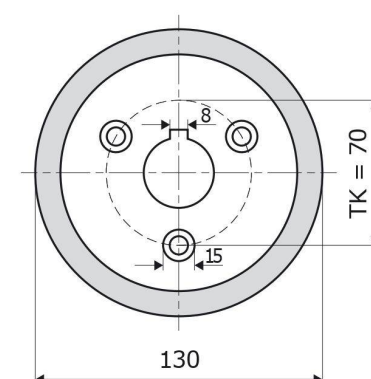
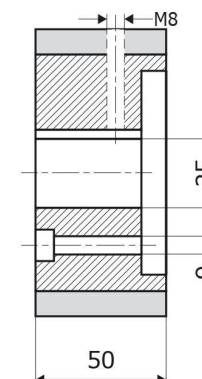
	100-50-25 Gubisch	100-35-25 Gubisch	100-25-25 Gubisch
B (mm)	50	35	25
Kat. št. Bestell Nr. Cat. No.	111-0146	111-0147	111-0148

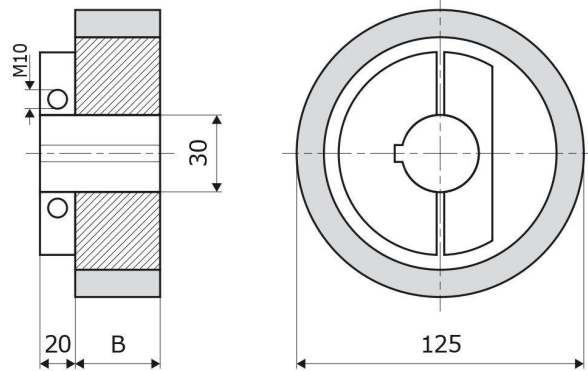
**GUBISCH**
 (Al)  70 ShA

	130-20-20,7-4V Gubisch
Kat. št. Bestell Nr. Cat. No.	111-0225

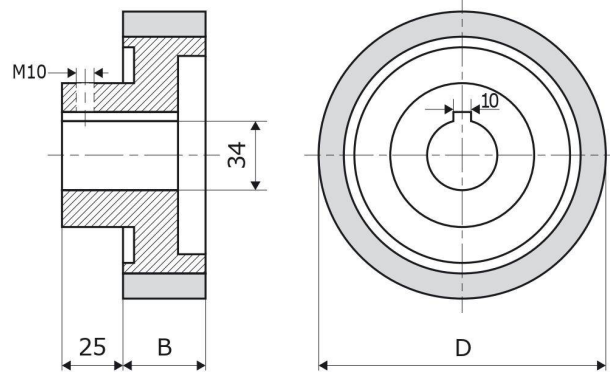
**GUBISCH**
 (Al)  70 ShA

	130-50-25-8-3V Gubisch
Kat. št. Bestell Nr. Cat. No.	111-0224

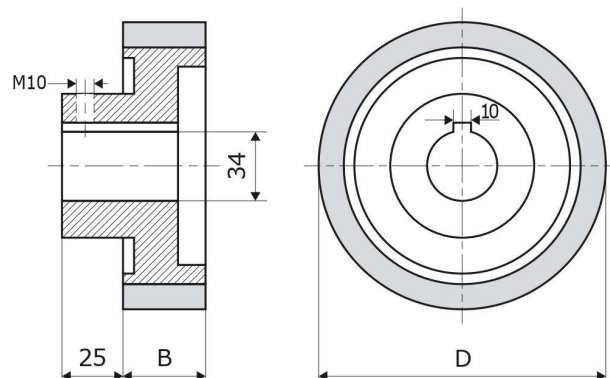


**HARBS**
 (Al)  **70 ShA**

	125-50-30 Harbs	125-35-30 Harbs
B (mm)	50	35
Kat. št. Bestell Nr. Cat. No.	111-0139	111-0140

**HARBS**
 (Fe)  **70 ShA**

	180-80 Harbs	180-50 Harbs	180-35 Harbs
D (mm)	180	180	180
B (mm)	80	50	35
Kat. št. Bestell Nr. Cat. No.	111-0095	111-0094	111-0093

**HARBS**
 (Fe)  **70 ShA**

	165-50 Harbs	165-35 Harbs
D (mm)	165	165
B (mm)	50	35
Kat. št. Bestell Nr. Cat. No.	111-0086	111-0085



A



C

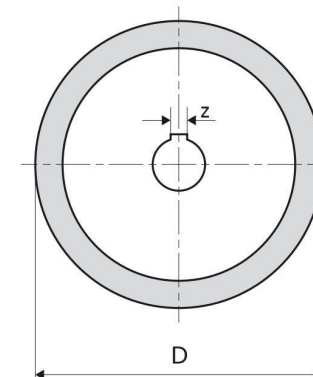
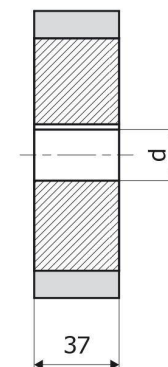


D

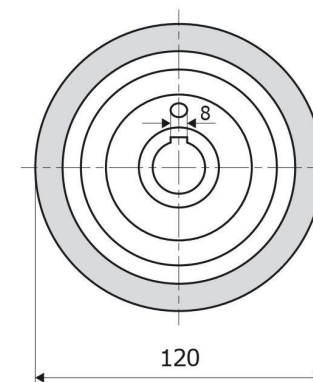
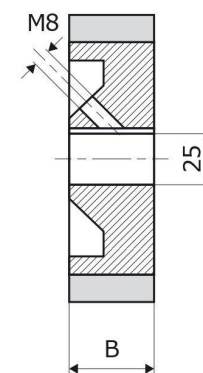
E

**GEORG FISCHER**

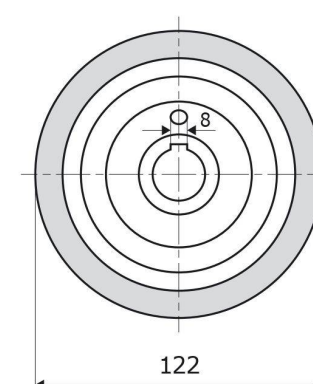
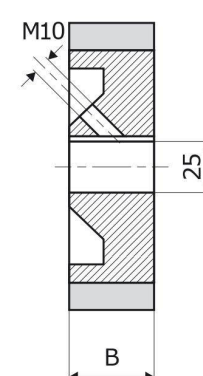
	183-37 GF	143-37 GF	123-37 GF
D (mm)	183	143	123
d (mm)	50	35	35
z (mm)	14	10	10
Kat. št. Bestell Nr. Cat. No.	111-0096	111-0083	111-0043

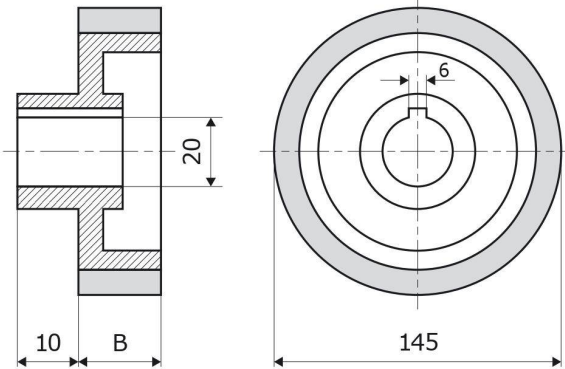
**GUILLIET**

	120-50-25 Guilliet	120-20-25 Guilliet
B (mm)	50	20
Kat. št. Bestell Nr. Cat. No.	111-0038	111-0027

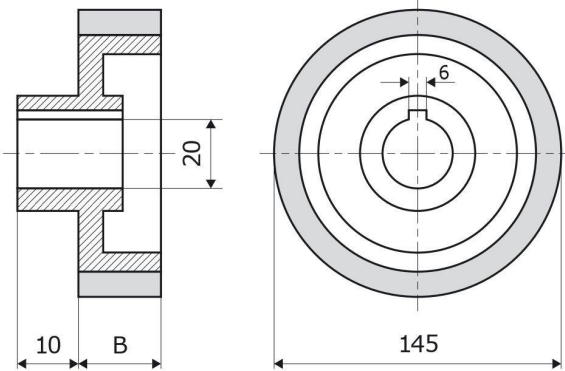
**Vierseiter, H+K**

	122-50-25 Vierseiter	122-20-25 Vierseiter
B (mm)	50	20
Kat. št. Bestell Nr. Cat. No.	111-0215	111-0214

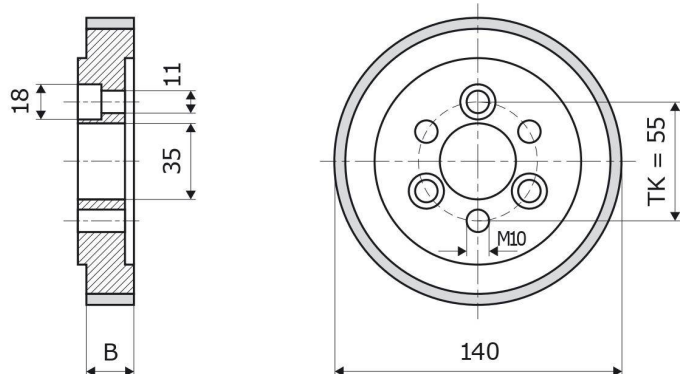


**SAC**
60 ShA

	145-60 SAC	145-50 SAC	145-40 SAC
B (mm)	60	50	40
Kat. št. Bestell Nr. Cat. No.	111-0205	111-0206	111-0207

**SAC**
60 ShA

	145-35 SAC	145-30 SAC
B (mm)	35	30
Kat. št. Bestell Nr. Cat. No.	111-0208	111-0209

**SCM**
70 ShA

	140-50-3V SCM	140-40-3V SCM
B (mm)	50	40
Kat. št. Bestell Nr. Cat. No.	111-0075	111-0185



A



B

C



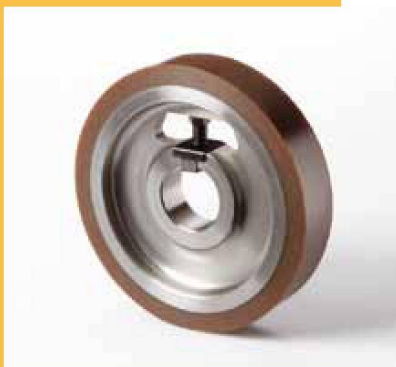
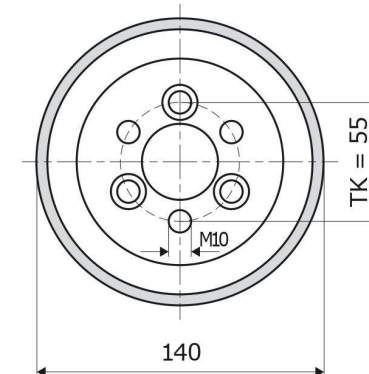
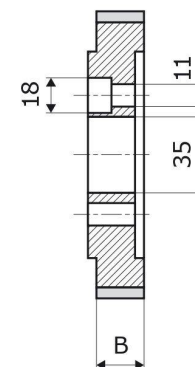
D

E

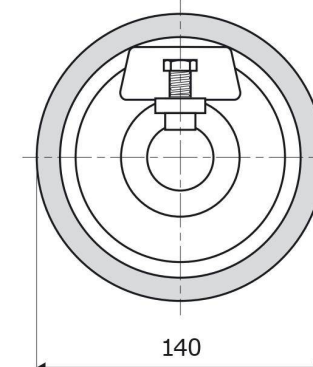
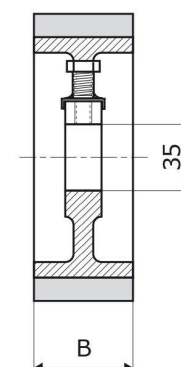


SCM	70 ShA
140-25-3V SCM	140-20-3V SCM
B (mm)	25
Kat. št. Bestell Nr. Cat. No.	111-0161
	111-0055

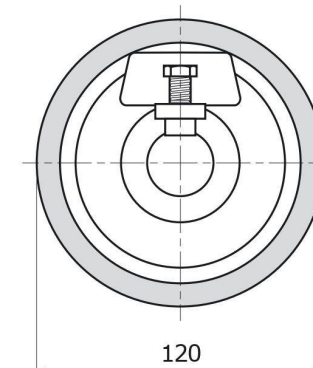
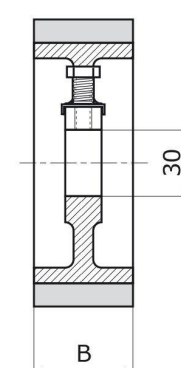
* Al opcijsko / Al optional / Al optional

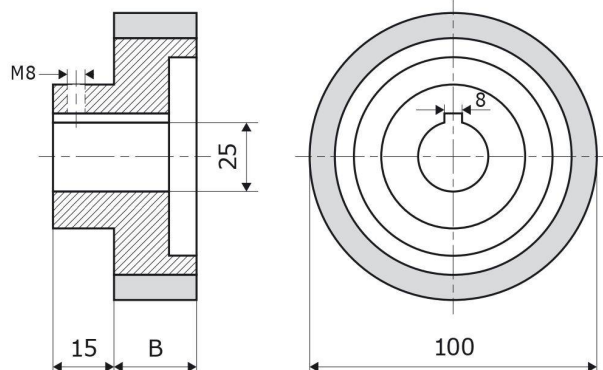


SCM	70 ShA		
140-50-35V SCM	140-30-35V SCM	140-20-35V SCM	
B (mm)	50	30	20
Kat. št. Bestell Nr. Cat. No.	111-0076	111-0067	111-0056

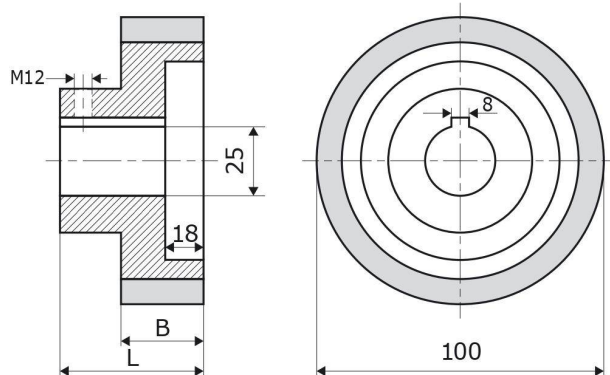


SCM	60 ShA	
120-50-30V SCM	120-20-30V SCM	
B (mm)	50	20
Kat. št. Bestell Nr. Cat. No.	111-0036	111-0026

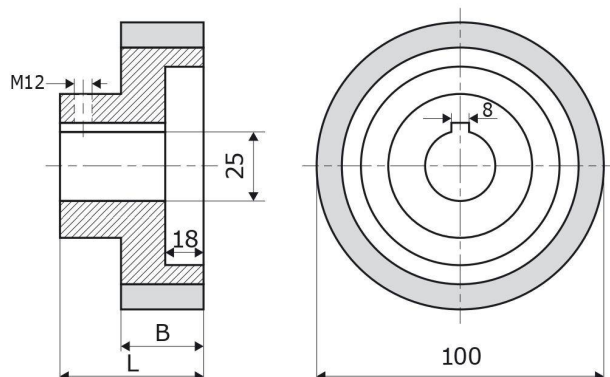


**SCM**
60 ShA

	100-60-25V SCM	100-30-25V SCM
B (mm)	60	30
Kat. št. Bestell Nr. Cat. No.	111-0002	111-0001

**SCM**
60 ShA

	100-40/170 SCM	100-40/80 SCM
B (mm)	40	40
L (mm)	170	80
Kat. št. Bestell Nr. Cat. No.	111-0187	111-0186

**SCM**
60 ShA

	100-40/65 SCM	100-30/55 SCM
B (mm)	40	30
L (mm)	65	55
Kat. št. Bestell Nr. Cat. No.	111-0188	111-0189



A

B

C

D

E

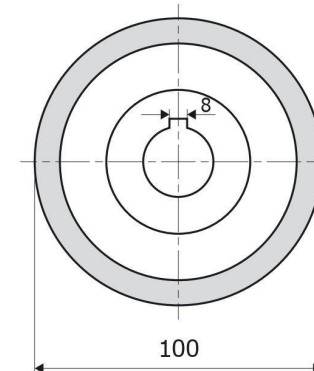
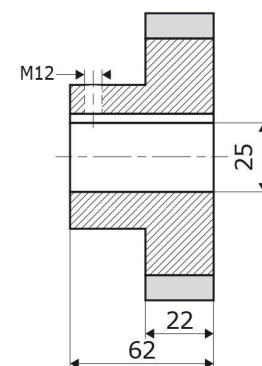
**SCM WINDOR**

AI W 60 ShA

100-22-25 (L=62)
SCM

Kat. št.
Bestell Nr.
Cat. No.

111-0191

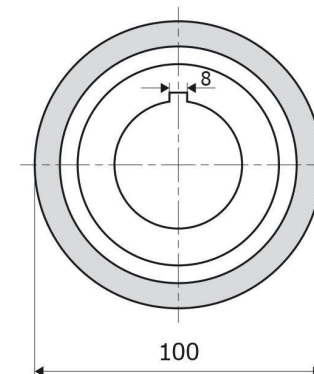
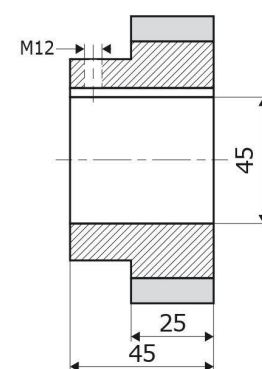
**SCM**

AI W 60 ShA

100-25-45
SCM

Kat. št.
Bestell Nr.
Cat. No.

111-0193

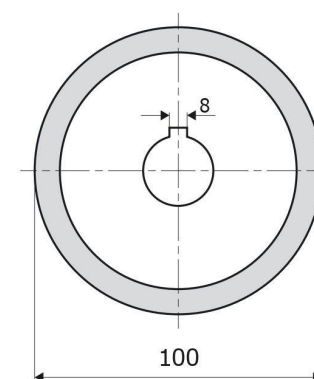
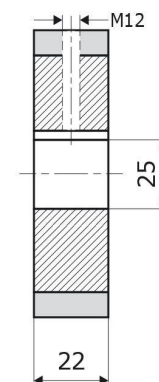
**SCM**

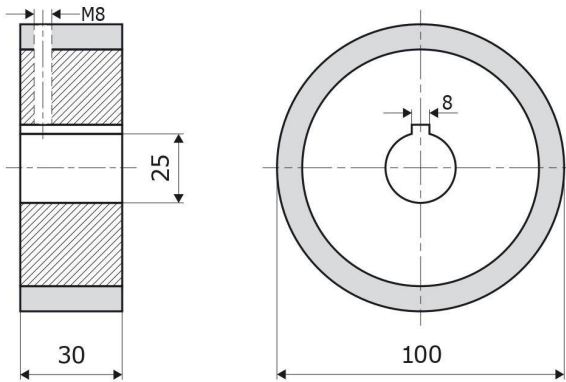
AI W 60 ShA

100-22-25
SCM

Kat. št.
Bestell Nr.
Cat. No.

111-0192





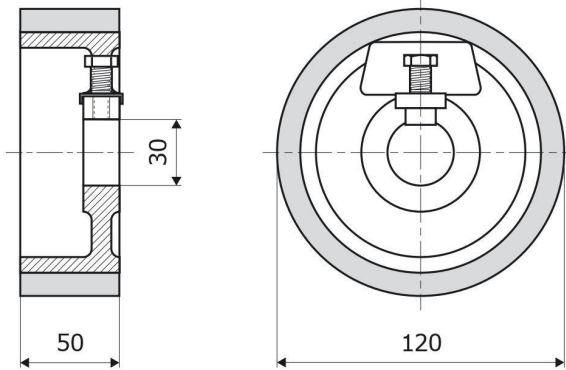
SCM

Al Δ W 60 ShA

100-30-25
SCM

Kat. št.
Bestell Nr.
Cat. No.

111-0190



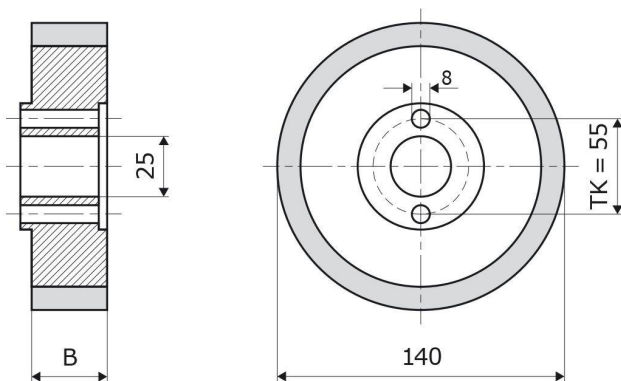
SCM

Fe Δ W 60 ShA

120-50-30A
SCM

Kat. št.
Bestell Nr.
Cat. No.

111-0221



WADKIN

Fe Δ B 70 ShA

	140-50-25 Wadkin	140-20-25 Wadkin	140-10-25 Wadkin
B (mm)	50	20	10
Kat. št.	111-0068	111-0053	111-0049
Bestell Nr.			
Cat. No.			

B (mm)

50

20

10

Kat. št.
Bestell Nr.
Cat. No.

111-0068

111-0053

111-0049



A

B

C

D

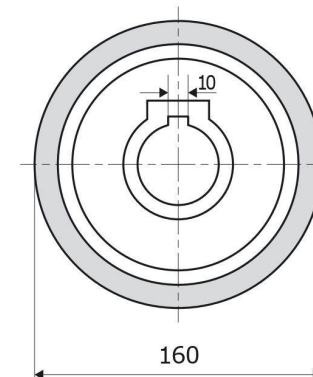
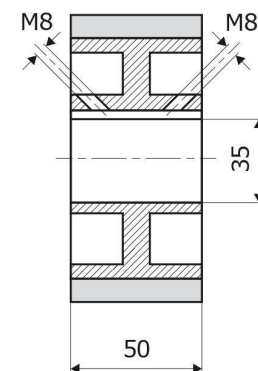
E

**VERBOOM**

160-50-35
Verboom

Kat. št.
Bestell Nr.
Cat. No.

111-0084

**STETON**

132-50
Steton

132-35
Steton

B (mm)

50

35

L1 (mm)

13

13

L2 (mm)

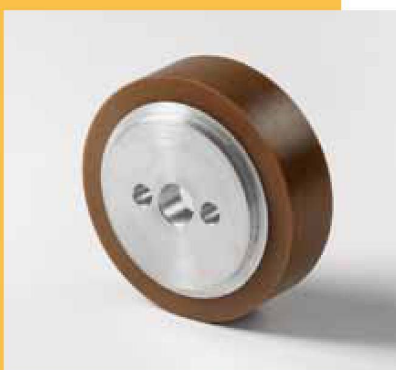
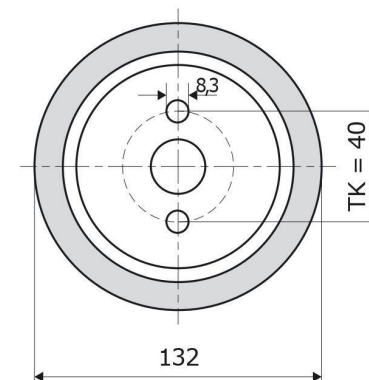
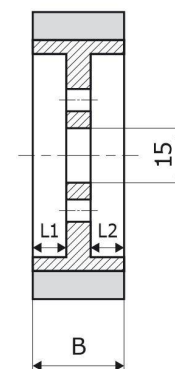
25

10

Kat. št.
Bestell Nr.
Cat. No.

111-0184

111-0183

**TPC**

100-40
TPC

100-30
TPC

B (mm)

40

30

L (mm)

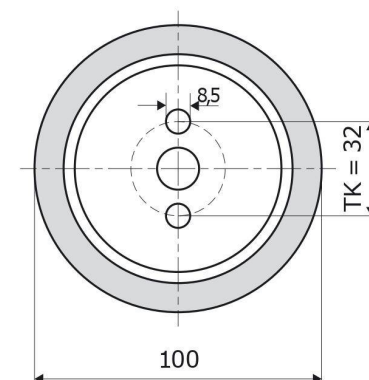
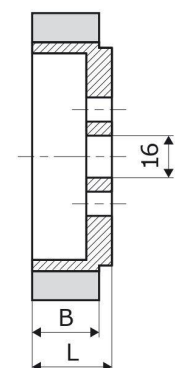
45

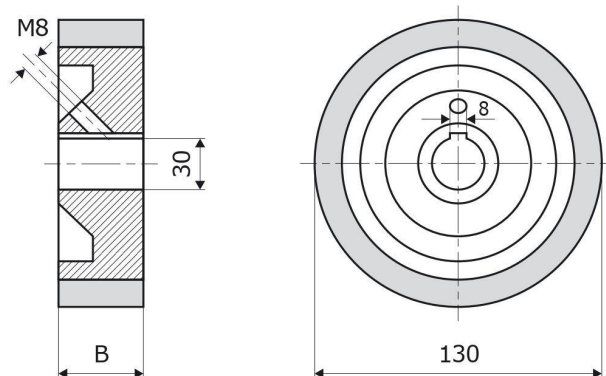
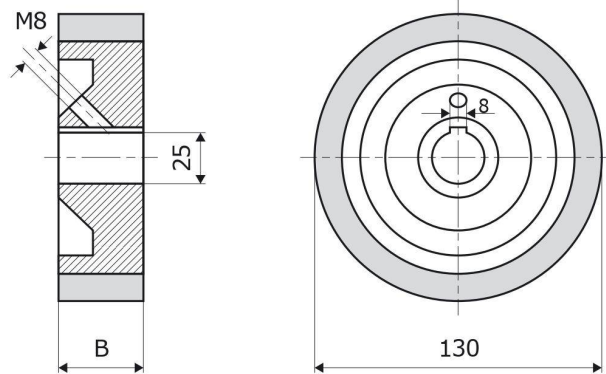
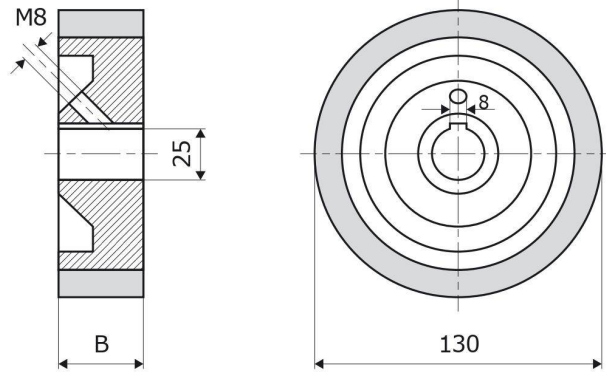
35

Kat. št.
Bestell Nr.
Cat. No.

111-0195

111-0196



**TSN**

	130-50-25 TSN	130-30-25 TSN
B (mm)	50	30
Kat. št. Bestell Nr. Cat. No.	111-0167	111-0201

TSN

	130-25-25 TSN	130-20-25 TSN
B (mm)	25	20
Kat. št. Bestell Nr. Cat. No.	111-0168	111-0169

TSN

	130-50-30 TSN	130-25-30 TSN	130-20-30 TSN
B (mm)	50	25	20
Kat. št. Bestell Nr. Cat. No.	111-0164	111-0180	111-0166



A

B

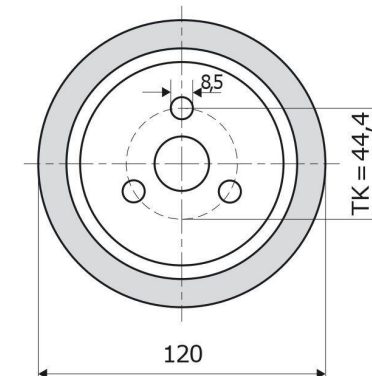
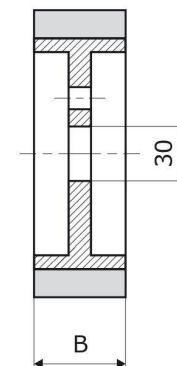
C

D

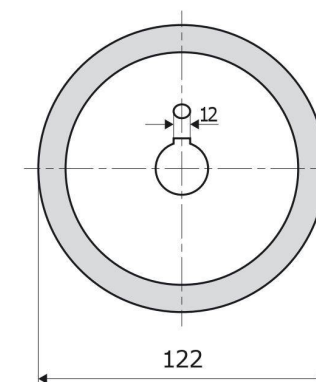
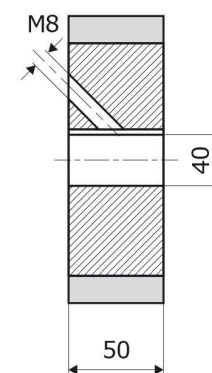
E

**CHUET**
70 ShA

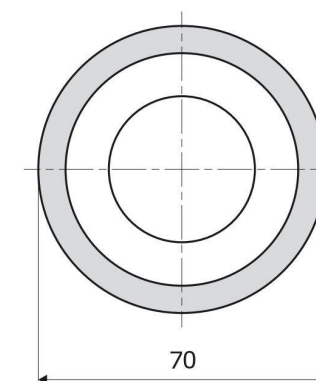
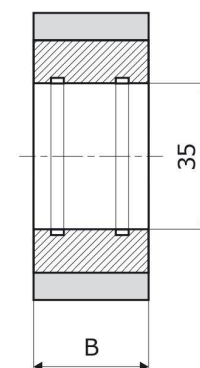
	120-100-30-3V Chuet	120-56-30-3V Chuet
B (mm)	100	56
Kat. št. Bestell Nr. Cat. No.	111-0241	111-0226

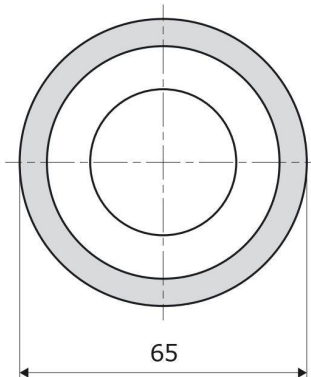
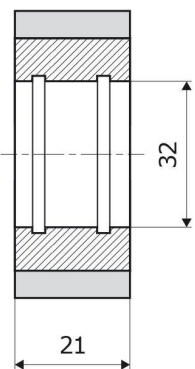
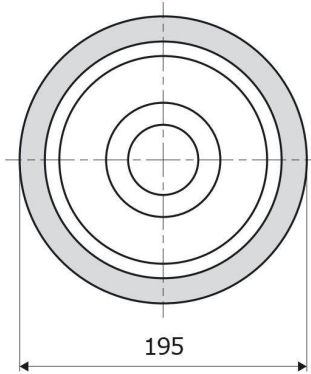
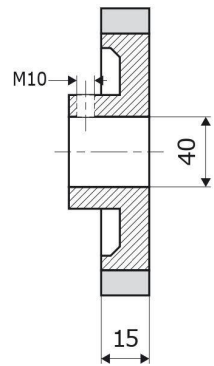
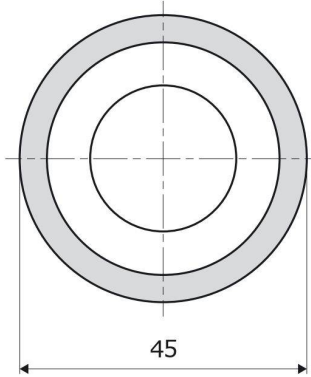
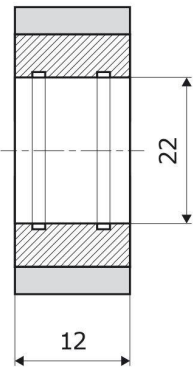
**MARTIN**
60 ShA

	122-50-40 Martin
Kat. št. Bestell Nr. Cat. No.	111-0042

**UMMANTELUNGSMASCHINEN
(Silikon)**
50 ShA

	70-50-35	70-25-35	70-15-35
B (mm)	50	25	15
Kat. št. Bestell Nr. Cat. No.	111-0172	111-0182	111-0174



**UMMANTELUNGSMASCHINEN**

Fe  70 ShA

45-12-22

Kat. št.
Bestell Nr.
Cat. No.

111-0199

DÜSPOHL

Al  70 ShA

195-15-40
Düspohl

Kat. št.
Bestell Nr.
Cat. No.

111-0200

BIMATIC

Fe  60 ShA

65-21-32
Bimatic

Kat. št.
Bestell Nr.
Cat. No.

111-0177



A



C



D

E

**IMA**

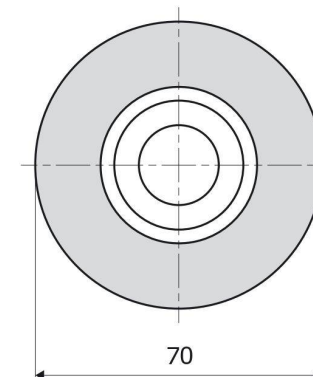
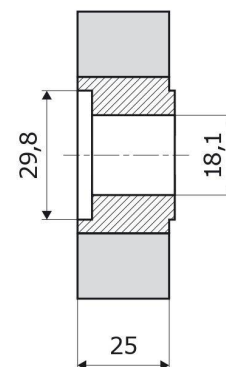


60 ShA

70-25-18,1
Ima

Kat. št.
Bestell Nr.
Cat. No.

111-0246

**HOMAG BRANDT**

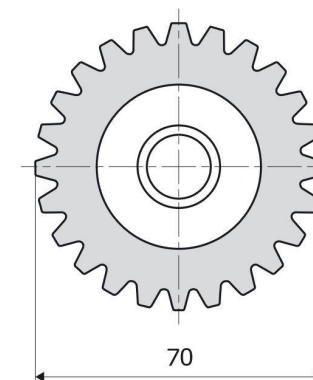
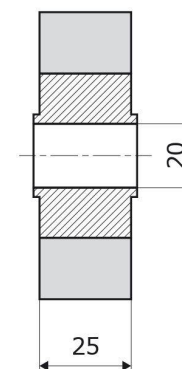


60 ShA

70-25-20-U
Homag

Kat. št.
Bestell Nr.
Cat. No.

111-0142

**HOMAG BRANDT**

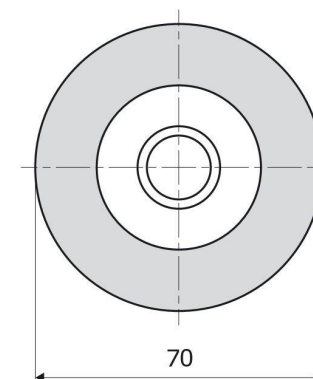
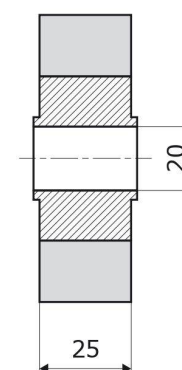


60 ShA

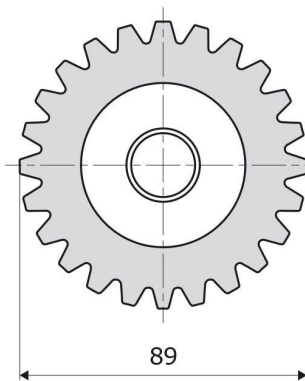
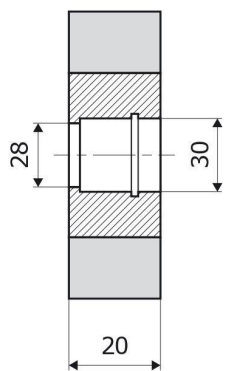
70-25-20
Homag

Kat. št.
Bestell Nr.
Cat. No.

111-0143



39



TAGLIABUE

Fe Δ w 60 ShA

89-20-30
Tagliabue

Kat. št.
Bestell Nr.
Cat. No.

111-0216



A

B

C

D

E



steel rollers



Teeth shape



Profile A - Weinig standard profile



Profile B - wet wood profile



Profile C - standard Elastomeri profile



Profile D - old Weinig profile



Profile E



Profile F



Profile G



Profile H - hard wood profile



PROFIL A



PROFIL B



PROFIL C



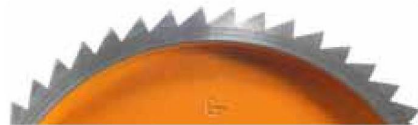
PROFIL D



PROFIL E



PROFIL F



PROFIL G



PROFIL H



PROFIL X



Smer zob
Richtung der Verzahnung
Teeth direction



straight-toothed -
order number R



helix-toothed -
no order number

• When ordering the steel rollers please specify the tooth profile and the tooth direction.

knurled steel rollers



KNURLED STEEL ROLLERS (PROFILE X)

An alternative to tooth-feed rollers are the steel knurled rollers.

This rollers are primarily designed for use when only small amount of material is being removed from the top surface of the workpiece.

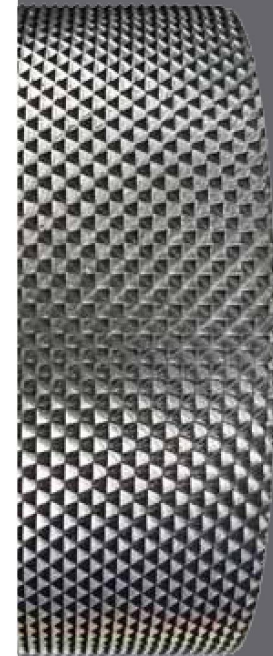
The teeth on the contact surface are small diamond shaped points, with a maximum "tooth mark" indentation of less than 1 mm deep.

As with the tooth-feed rollers, the contact surface of this rollers is also covered with a layer of hard chrome.

When ordering, please specify roller dimensions (diameter, width, bore, key-vey), knurled and the producer of the machine. Order number Z is a general mark depicting all steel rollers.

Example

Roller 140-50-35 ZX Weinig means: a steel roller for Weinig machine, 140 mm in diameter and 50 mm wide, with knurled surface.

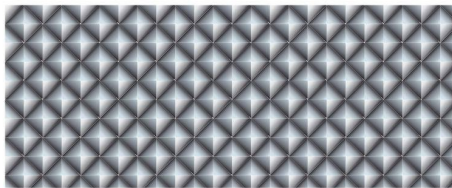


B

C

D

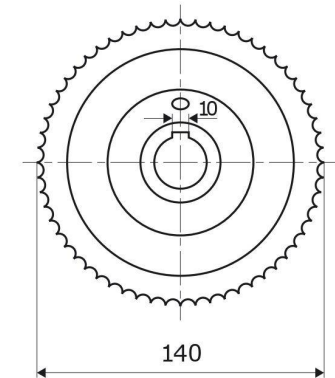
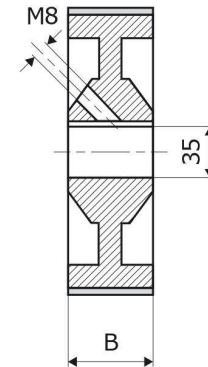
E



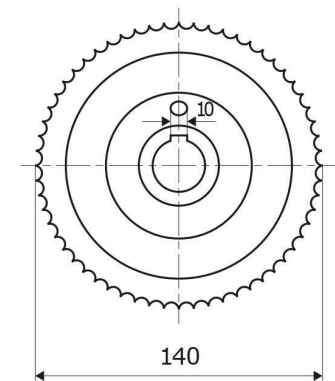
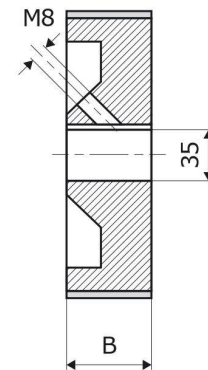
All our steel rollers can be made with knurled contact surface.

**WEINIG**

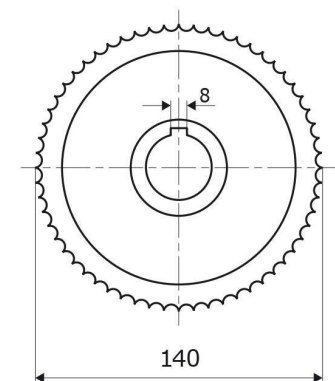
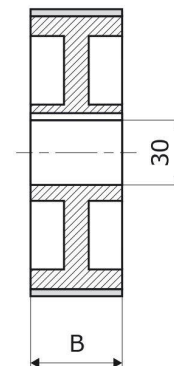
B (mm)	50	30	25
Izdelek Artikel Item	140-50-35 Z Weinig	140-30-35 Z Weinig	140-25-35 Z Weinig

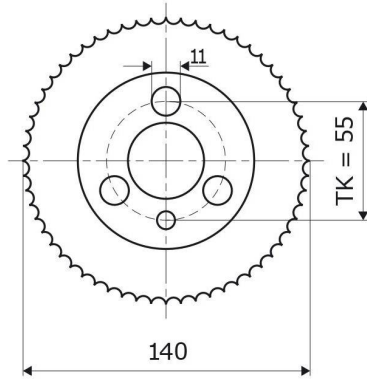
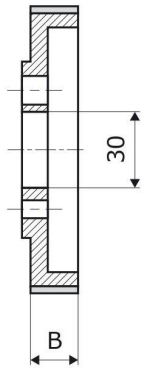
**WEINIG**

B (mm)	20	15	10
Izdelek Artikel Item	140-20-35 Z Weinig	140-15-35 Z Weinig	140-10-35 Z Weinig

**WEINIG**

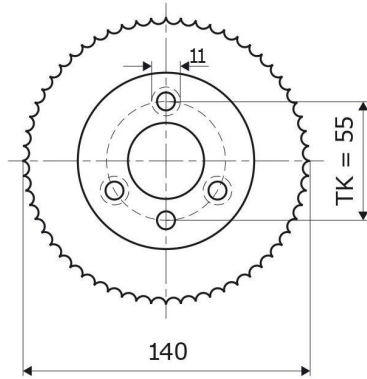
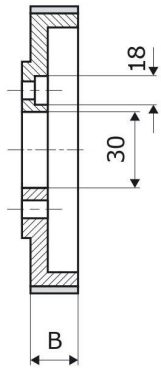
B (mm)	50	30	20	15
Izdelek Artikel Item	140-50-30 Z Weinig	140-30-30 Z Weinig	140-20-30 Z Weinig	140-15-30 Z Weinig





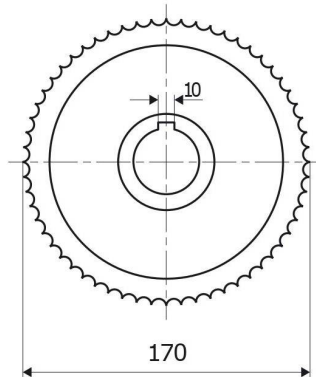
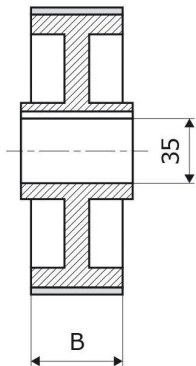
WEINIG

B (mm)	50	30
Izdelek Artikel Item	140-50-30-3V Z Weinig	140-30-30-3V Z Weinig



WEINIG

B (mm)	25	20	15
Izdelek Artikel Item	140-25-30-3V Z Weinig	140-20-30-3V Z Weinig	140-15-30-3V Z Weinig



WEINIG

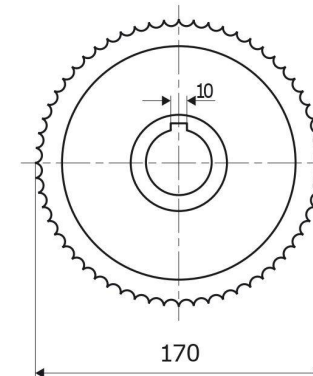
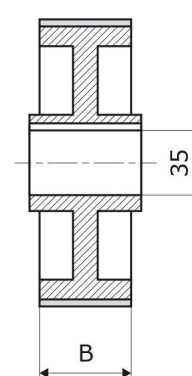
B (mm)	50	30	25
Izdelek Artikel Item	170-50-35 Z Weinig	170-30-35 Z Weinig	170-25-35 Z Weinig



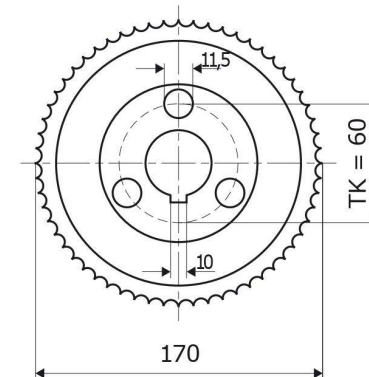
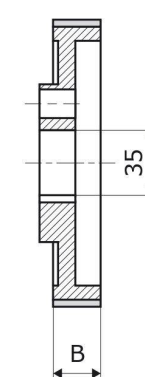
• When ordering the steel rollers please specify the tooth profile and the tooth direction.

**WEINIG**

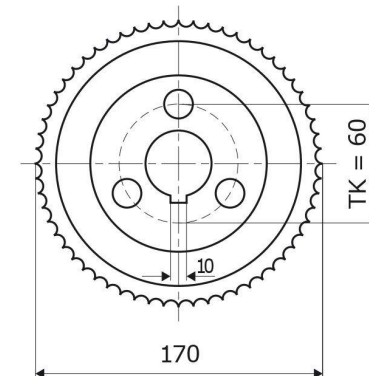
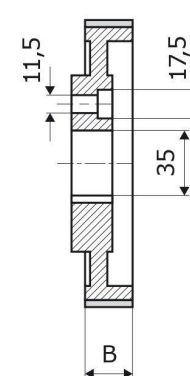
B (mm)	20	15
Izdelek Artikel Item	170-20-35 Z Weinig	170-15-35 Z Weinig

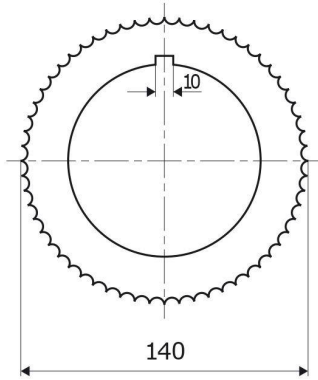
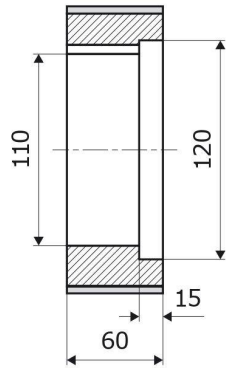
**WEINIG**

B (mm)	50	30
Izdelek Artikel Item	170-50-35-3V Z Weinig	170-30-35-3V Z Weinig

**WEINIG**

B (mm)	25	20	15
Izdelek Artikel Item	170-25-35-3V Z Weinig	170-20-35-3V Z Weinig	170-15-35-3V Z Weinig





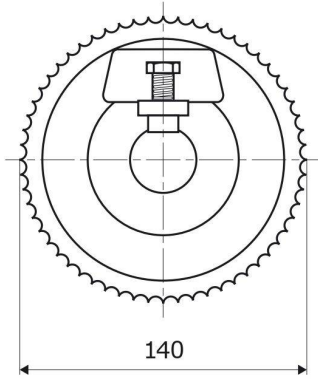
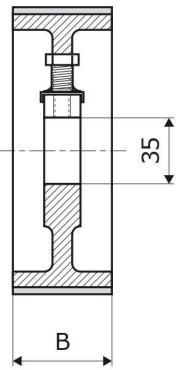
WEINIG

Izdelek
Artikel
Item

140-60-110-10 Z
Weinig



B

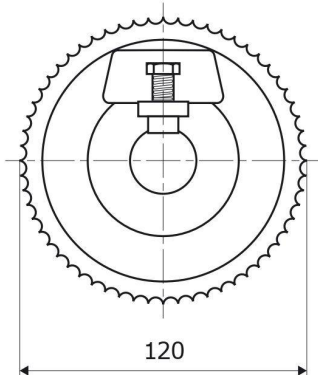
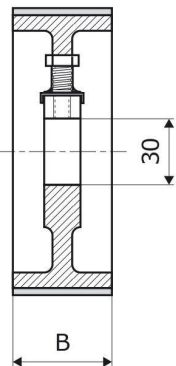


SCM

B (mm)	50	30	25	20
Izdelek Artikel Item	140-50-35 Z SCM	140-30-35 Z SCM	140-25-35 Z SCM	140-20-35 Z SCM



C



SCM

B (mm)	50	20
Izdelek Artikel Item	120-50-30 Z SCM	120-20-30 Z SCM



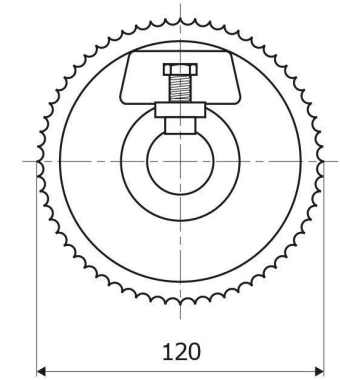
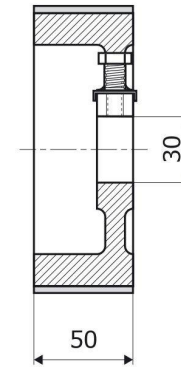
D

E

**SCM**

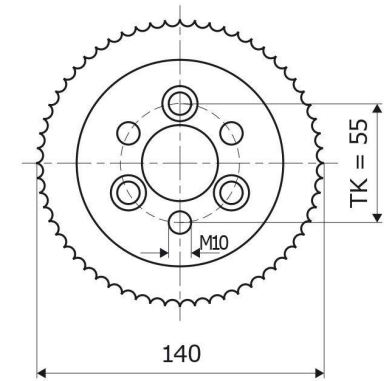
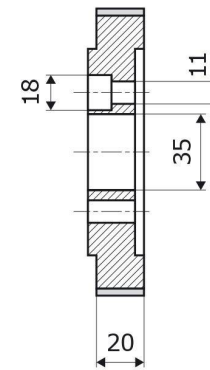
Izdelek
Artikel
Item

120-50-30 Z
SCM Asimetric

**SCM**

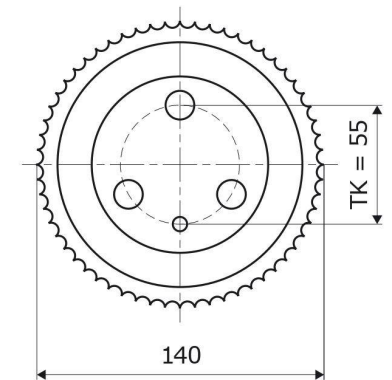
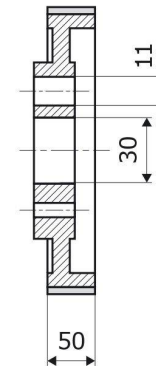
Izdelek
Artikel
Item

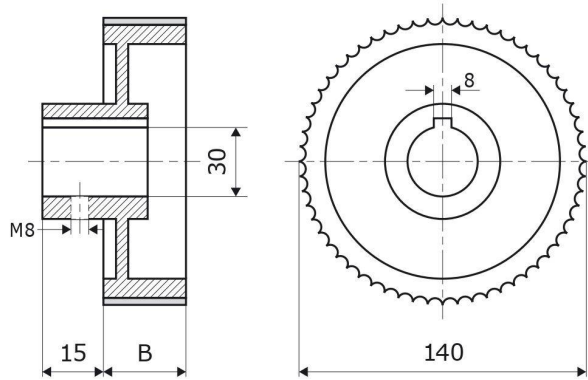
140-20-35-3V Z
SCM

**SCM**

Izdelek
Artikel
Item

140-50-30-4V Z
SCM



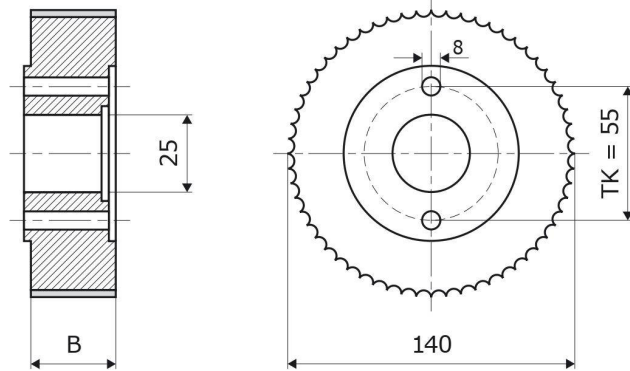


GUBISCH

B (mm)	50	30	25
Izdelek Artikel Item	140-50 Z Gubisch	140-30 Z Gubisch	140-25 Z Gubisch



B

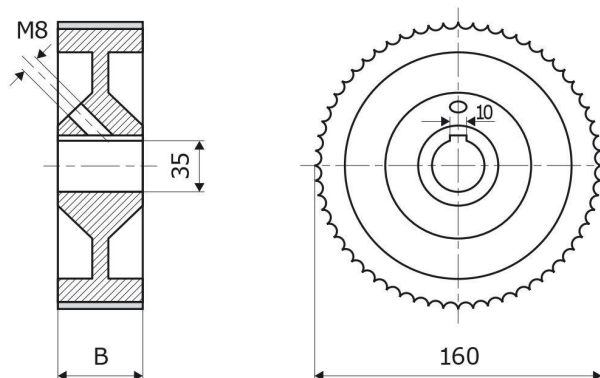


WADKIN

B (mm)	50	20	10
Izdelek Artikel Item	140-50-25 Z Wadkin	140-20-25 Z Wadkin	140-10-25 Z Wadkin



C



VERBOOM

B (mm)	50	25
Izdelek Artikel Item	160-50-35 Z Verboom	160-25-35 Z Verboom

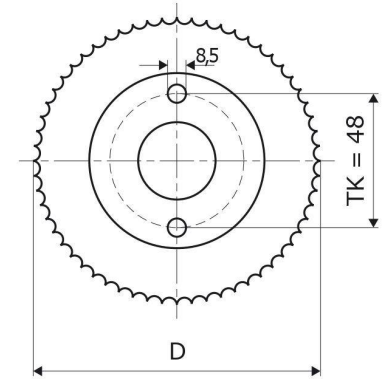
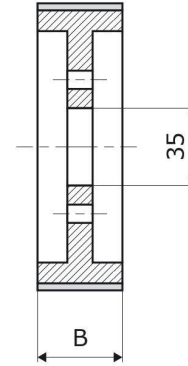


D

E

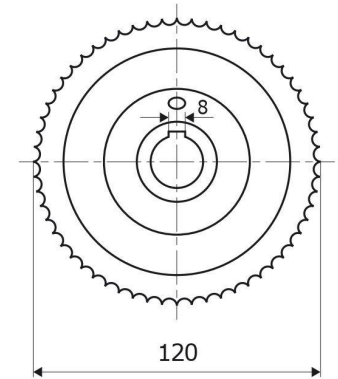
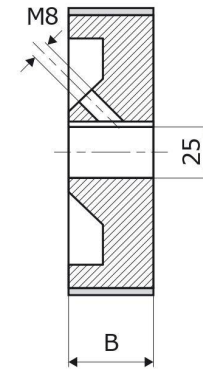


D (mm)	110	110	120	120
B (mm)	60	50	60	50
Izdelek Artikel Item	110-60 Z	110-50 Z	120-60 Z	120-50 Z



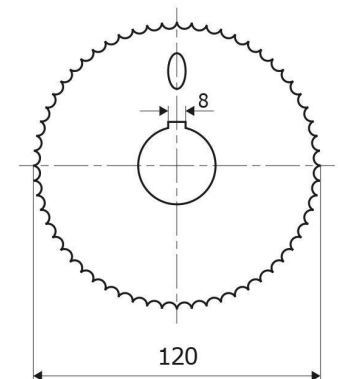
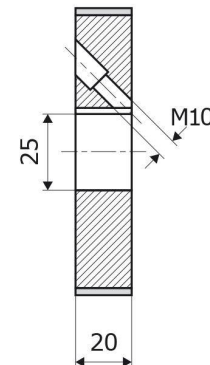
GUILLIET

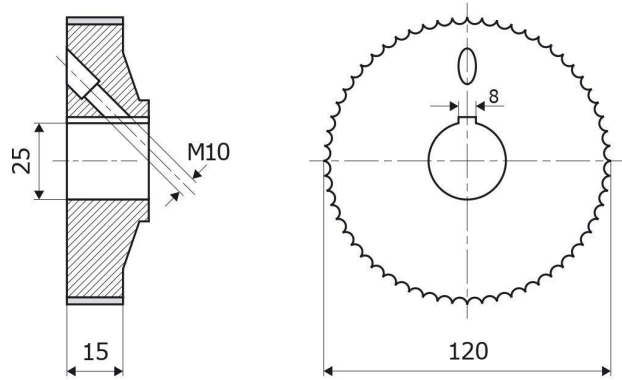
B (mm)	50	20
Izdelek Artikel Item	120-50-25 Z Guilliet	120-20-25 Z Guilliet



VIERSEITER, H+K

Izdelek Artikel Item	120-20-25 Z Vierseiter, H+K
----------------------------	--------------------------------



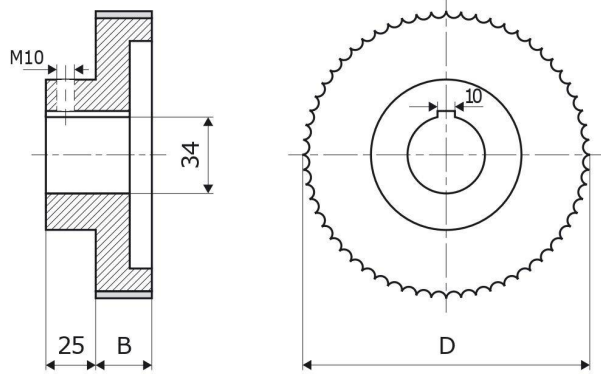


VIERSEITER, H+K

Izdelek	120-15-25 Z
Artikel	Vierseiter, H+K
Item	



B

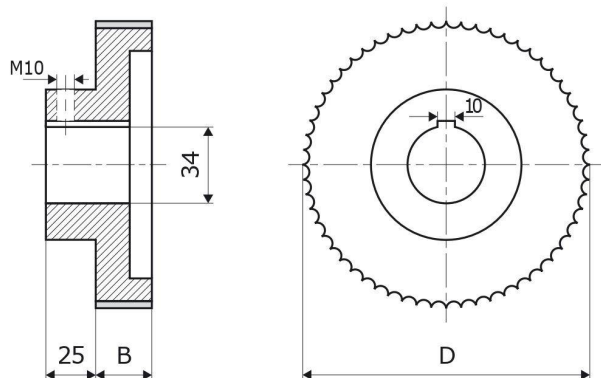


HARBS

D (mm)	180	180	180
B (mm)	80	50	35
Izdelek	180-80 Z	180-50 Z	180-35 Z
Artikel	Harbs	Harbs	Harbs
Item			



C



HARBS

D (mm)	165	165
B (mm)	50	35
Izdelek	165-50 Z	165-35 Z
Artikel	Harbs	Harbs
Item		



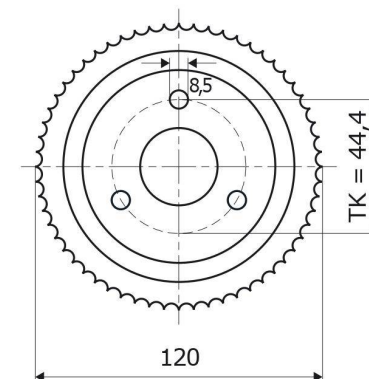
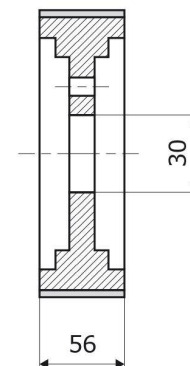
D

E

**CHUET**

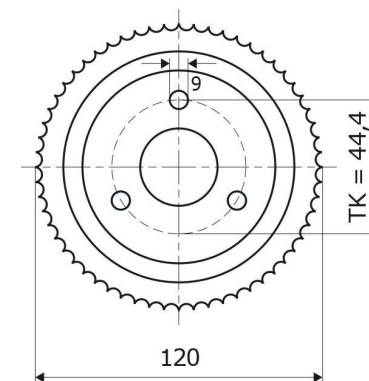
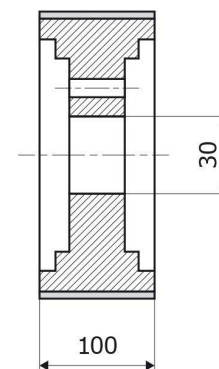
Izdelek
Artikel
Item

120-56-30-3V Z
Chuet

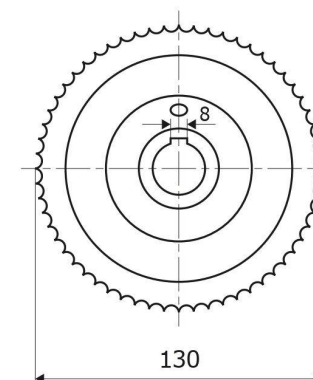
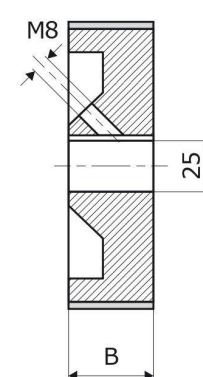
**CHUET**

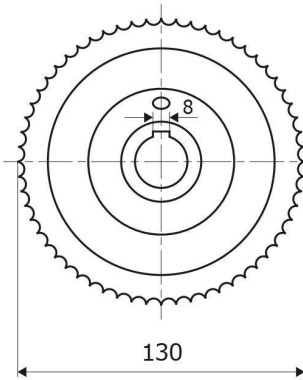
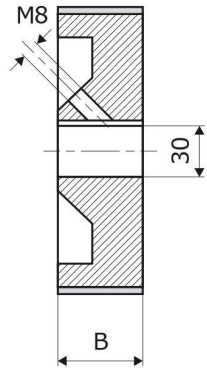
Izdelek
Artikel
Item

120-100-30-3V Z
Chuet

**TSN**

B (mm)	50	30	25	20
Izdelek	130-50-25 Z	130-30-25 Z	130-25-25 Z	130-20-25 Z
Artikel	TSN	TSN	TSN	TSN
Item				



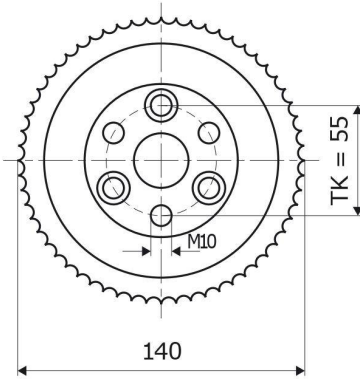
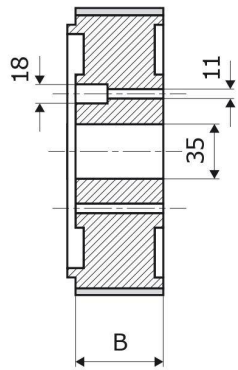


TSN

B (mm)	50	25	20
Izdelek Artikel Item	130-50-30 Z TSN	130-25-30 Z TSN	130-20-30 Z TSN



B

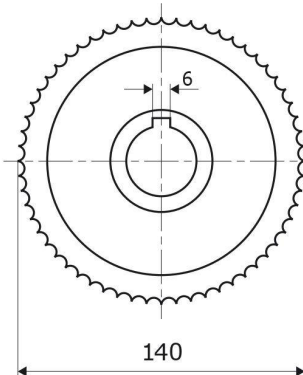
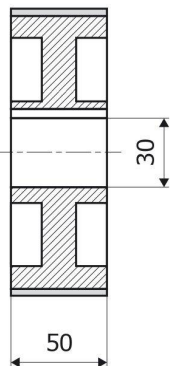


LEADERMAC

B (mm)	48	23
Izdelek Artikel Item	140-48-35-6V Z Leadermac	140-23-35-6V Z Leadermac



C



LESTRO

Izdelek Artikel Item	140-50-30-6 Z Lestro
----------------------------	-------------------------



D

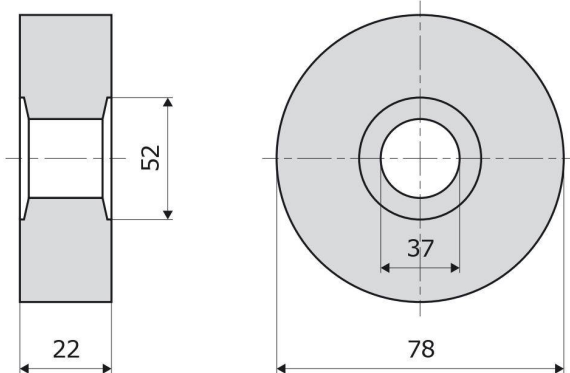
E

technical rubber products



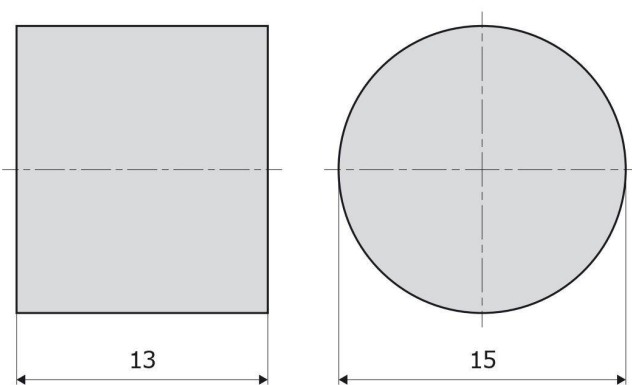
TECHNICAL RUBBER PRODUCTS production and renewal

- rubber coated chain plates, plugs and rings for edgeling and bonding machines (Brandt, Homag, HolzHer, Ott ...)
- rollers for glue application
- various technical custom made products

**OLIMPIC RING**
 **60 ShA**

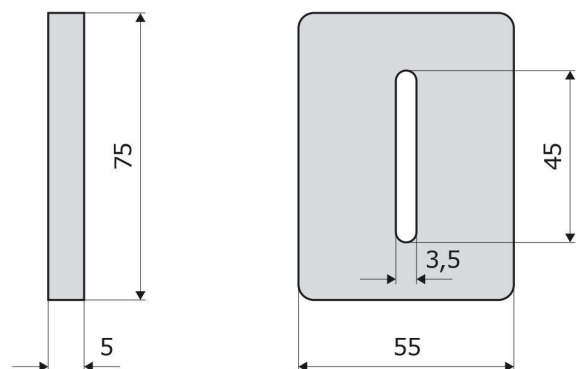
Izdelek
Artikel
Item

78-22-37 Olympic Ring

**HOLZ-HER**
 **60 ShA**

Izdelek
Artikel
Item

15-13 Holz-her


GUMIJASTA PLOŠČICA
GUMMIPLATTE
RUBBER PAD
 **60 ShA**

Izdelek
Artikel
Item

75-55-5



C

D

E





RUBBER CYLINDERS production and renewal

- for sanders
 - for gluing machines
 - for staining machines (foam rubber)
 - for paint and varnish machines
 - for conveyors
 - various custom made rubber cylinders
- Repair time: 5-7 working days (shorter term possible on request)

Max. cylinder dimensions:

- max. length 3200 mm
- max. diameter 380 mm
- max. weight 500 kg





SERVICE

- metal cylinder core production and repair of damaged cores
- cylindrical and convex-concave grinding
- dynamic balancing of cylinders
- cutting of steel and aluminium
- groove cutting

